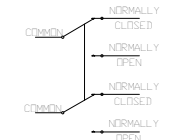


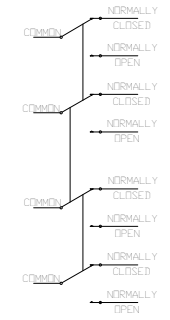
REV	EGG	DESCRIPTION	DATE	BY	APPD
B	13758	CHANGE MOUNTING VIEW	8/7/2014	JK	JK

ELECTRICAL DATA

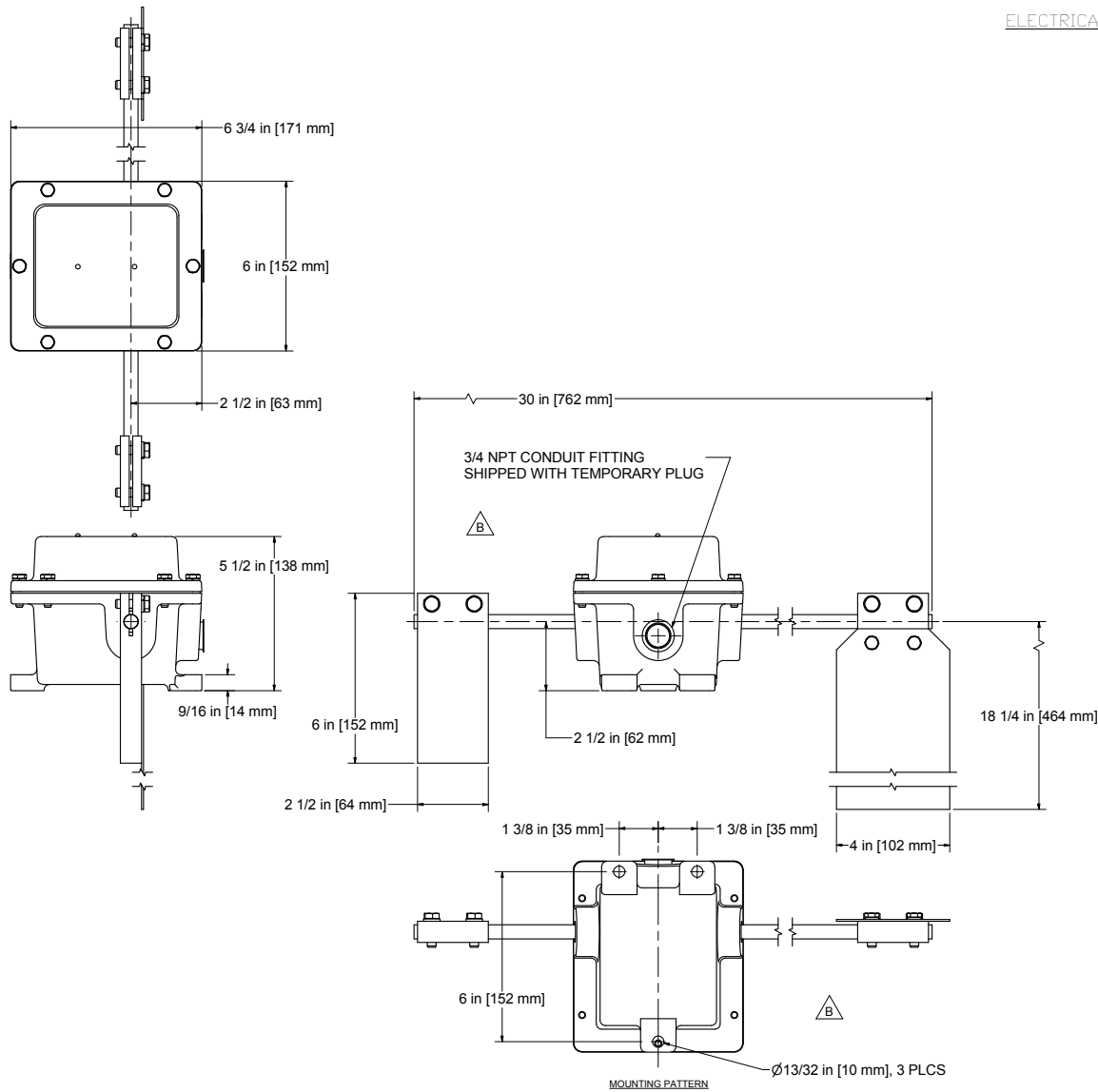
FS-4 / FS-4D / FS-4X: 1 DP/DT SWITCH



FS-5 / FS-5D / FS-5X: 2 DP/DT SWITCHES



**DP/DT CONTACT RATINGS:**  
 15 A, 125/250 V AC  
 3/4 HP, 125 V AC; 1-1/2 HP, 250 V AC



ALL DIMS FOR REFERENCE ONLY.  
 EPOXY COATING AVAILABLE.  
 OTHER SHAFT LENGTHS AVAILABLE.

TYPE 4X ENCLOSURE SHOWN.

TYPE 4X AND CLASS II, GROUPS E, F & G  
 (DUST-IGNITION PROOF) MODELS AVAILABLE.

CLASS I, GROUPS C & D, CLASS II, GROUPS E, F & G  
 HAZARDOUS LOCATIONS MODELS AVAILABLE.

DRAWN	11/6/2003	 Conveyor Components Company Division of Material Control, Inc. 130 Seltzer Road, Crossville, Michigan 49722 U.S.A.
CHECKED	8/8/2014	
APPROVED	11/6/2003	
PART		MODEL FS DP/DT PRODUCT DRAWING
D0210032 THIS PRINT IS PROPERTY OF CONVEYOR COMPONENTS CO., AND MAY NOT BE USED IN WHOLE OR PART WITHOUT WRITTEN PERMISSION.		Drawing is computer generated, and print might not be to scale. SIZE: D0210032.dwg SCALE:
		REV: A
		SHEET 1 OF 1