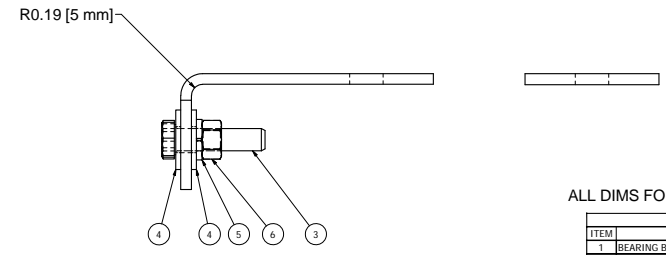
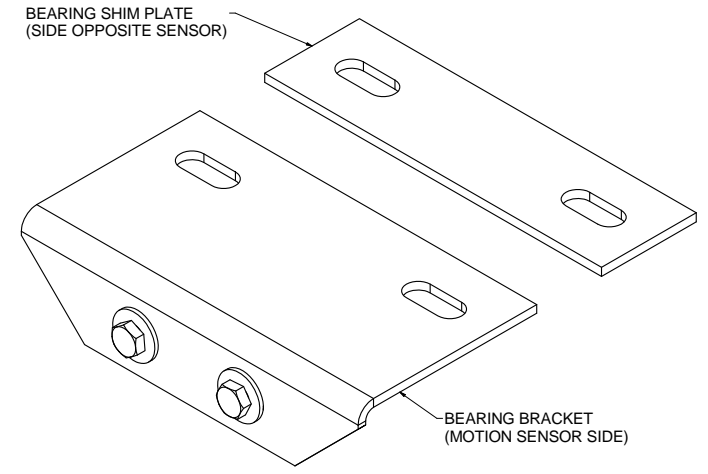
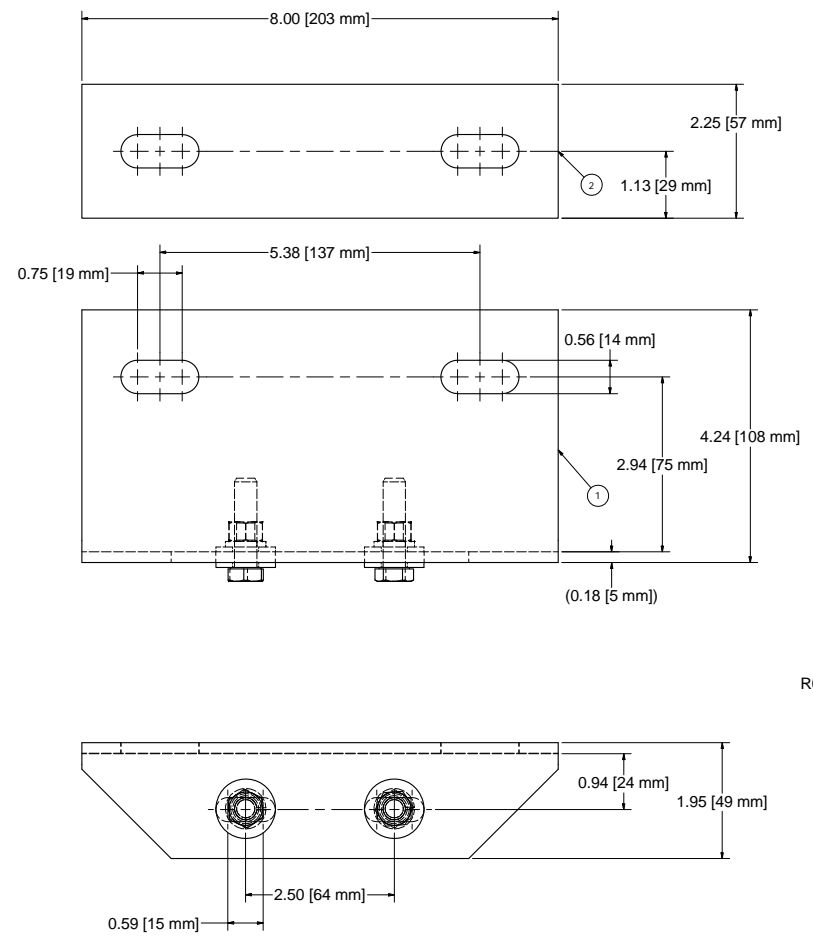


REV	ECO	DESCRIPTION	DATE	BY	AP
		INITIAL RELEASE	11/1/2011	GL	



ALL DIMS FOR REFERENCE ONLY.

PARTS LIST		
ITEM	DESCRIPTION	QTY
1	BEARING BRACKET FORMED B-1, #311	1
2	SHIM PLATE B-1	1
3	3/8-16 X 1-1/2 HEX HEAD CAP SCREW Z/P	2
4	3/8 FLATWASHER Z/P	4
5	3/8 LOCKWASHER Z/P	2
6	3/8-16 HEX NUT Z/P	2

DRAWN GL	11/1/2011	 Conveyor Components Company 130 Selzer Road Crossville, Michigan, U.S.A. 48422
CHECKED JK	11/3/2011	
APPROVED JK	11/3/2011	TITLE 311 (MS-11) PRODUCT DRAWING
PART B11 (MS-11)		Drawing is computer generated, and print might not be to scale.
THIS PRINT IS PROPERTY OF CONVEYOR COMPONENTS CO., AND MAY NOT BE USED IN WHOLE OR PART WITHOUT WRITTEN PERMISSION.		SIZE D
		DWG NO D0200147.dwg
		SCALE
		REV
		SHEET 1 OF 1