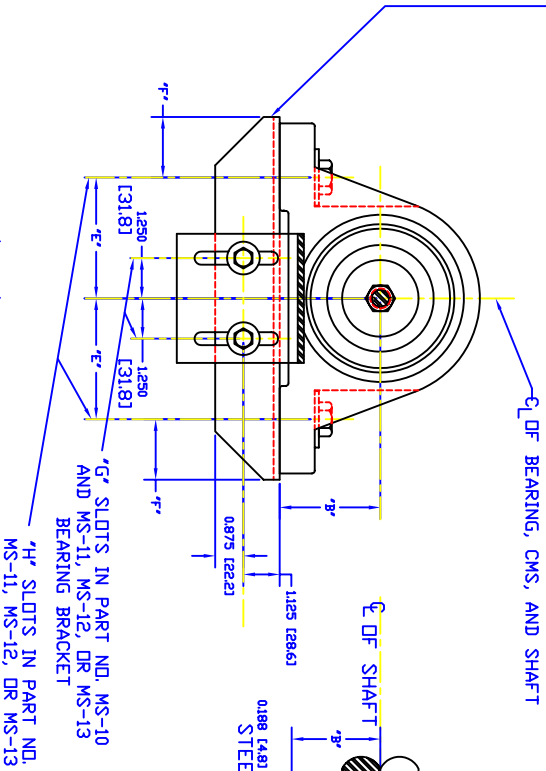


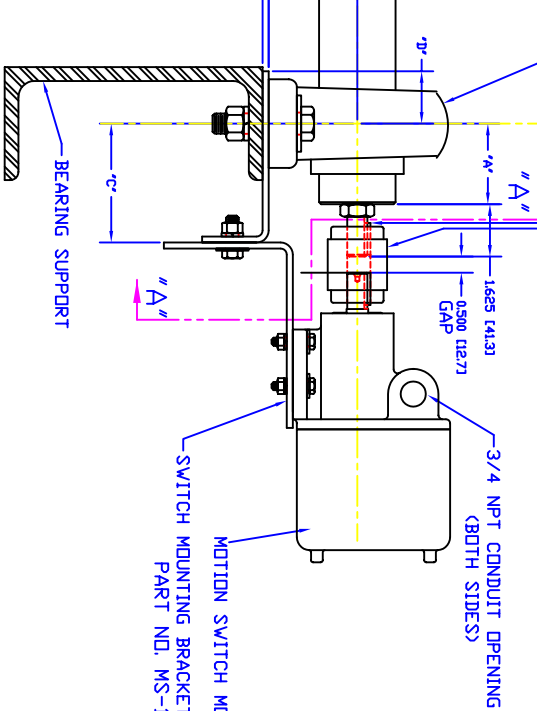
DWG. NO.	D0200098	SHEET	REV.
REV. ECD.	DESCRIPTION	DATE	BY
REVISIONS			

BEARING BRACKET (BENEATH NEAR-SIDE BEARING, PART 1 OF 2) & SHIM PLATE (BENEATH FAR-SIDE BEARING, PART 2 OF 2)
PART NUMBERS: MS-11, MS-12, OR MS-13 (SEE TABLE)
TYPICAL PILLLOW BLOCK BEARING

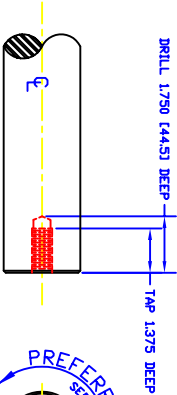
SECTION "A"- "A"



STUB SHAFT WITH JAM NUT (OPTIONAL)
PART NO. MS-3
NOTE: SEE DETAIL "X" OF SHAFT END PREPARATION FOR STUB SHAFT
TYPICAL FLEXIBLE SHAFT COUPLING
PART NO. MS-4



NOTE:
USE UNDER PILLLOW BLOCK ON SIDE OPPOSITE MODEL CMS



NOTE:
WHEN THREADED STUB SHAFT (PART NUMBER MS-3 OR EQUAL) IS TO BE USED IT IS RECOMMENDED THAT THE LOCATION OF THE STUB BE IN THE END OF THE SHAFT THAT ROTATES COUNTERCLOCKWISE. THIS ALLOWS THE THREADS TO CONTINUE BEING UNDER A CONSTANT FASTENING TORQUE WHILE THE SHAFT TURNS. IF THE ROTATION IS CLOCKWISE OR THE SHAFT IS FOR REVERSING TYPE SERVICE, MAKE SURE THAT THE JAM NUT IS LOCKED TIGHT AGAINST THE SHAFT.

DETAIL "X"

NOTE:
WHEN THREADED STUB SHAFT (PART NUMBER MS-3 OR EQUAL) IS TO BE USED IT IS RECOMMENDED THAT THE LOCATION OF THE STUB BE IN THE END OF THE SHAFT THAT ROTATES COUNTERCLOCKWISE. THIS ALLOWS THE THREADS TO CONTINUE BEING UNDER A CONSTANT FASTENING TORQUE WHILE THE SHAFT TURNS. IF THE ROTATION IS CLOCKWISE OR THE SHAFT IS FOR REVERSING TYPE SERVICE, MAKE SURE THAT THE JAM NUT IS LOCKED TIGHT AGAINST THE SHAFT.

BEARING BRACKET REFERENCE TABLE

PART NO.	SHAFT DIA.	"A"	"B"	"C"	"D"	"E"	"F"	"G"	"H"
MS-11	1-7/16 (36.51)	1-1/4 TO 2 (31.8 TO 50.8)	1-7/8 TO 2-1/8 (47.6 TO 54.0)	3-1/8 (75.9)	1-1/8 (28.6)	2-11/16 (68.3)	1-13/16 (46.0)	13/32" X 11.G	9/16" X 1-5/16.G
MS-12	1-15/16 TO 2-7/16 (42.2 TO 61.9)	1-1/2 TO 2-5/16 (38.1 TO 63.1)	2-1/4 TO 3 (57.2 TO 76.2)	3-3/4 (95.3)	1-5/8 (41.3)	3-11/16 (93.7)	1-15/16 (49.2)	13/32" X 11.G	13/16" X 2.G
MS-13	1-13/16 TO 2-1/8 (41.3 TO 50.8)	1-1/2 TO 2-5/16 (38.1 TO 63.1)	2-1/4 TO 3 (57.2 TO 76.2)	3-3/4 (95.3)	1-5/8 (41.3)	3-11/16 (93.7)	1-15/16 (49.2)	10/32" X 25.4.G	12/16" X 50.8.G

- NOTES:
- IT IS RECOMMENDED THAT A COUPLING GUARD SUCH AS PART NO. MS-5 BE USED TO PROTECT THE ROTATING SHAFTS.
 - ALL MOUNTING HARDWARE IS INCLUDED WITH ANY BRACKETS OR GUARDS.
 - ALL DIMENSIONS IN □ ARE IN MILLIMETERS.

THIS DRAWING IS COMPUTER GENERATED.			
DWG. NO.	D0200098	SHEET	1-1
REV.		DATE	
SCALE	HALF	SIZE	D
MODEL CMS MOUNTING ARRANGEMENT			
CONVEYOR COMPONENTS CO.			
130 SELTZER RD. CROSSVILLE, MI 48422			
PLEASE RETURN ON DEMAND.			