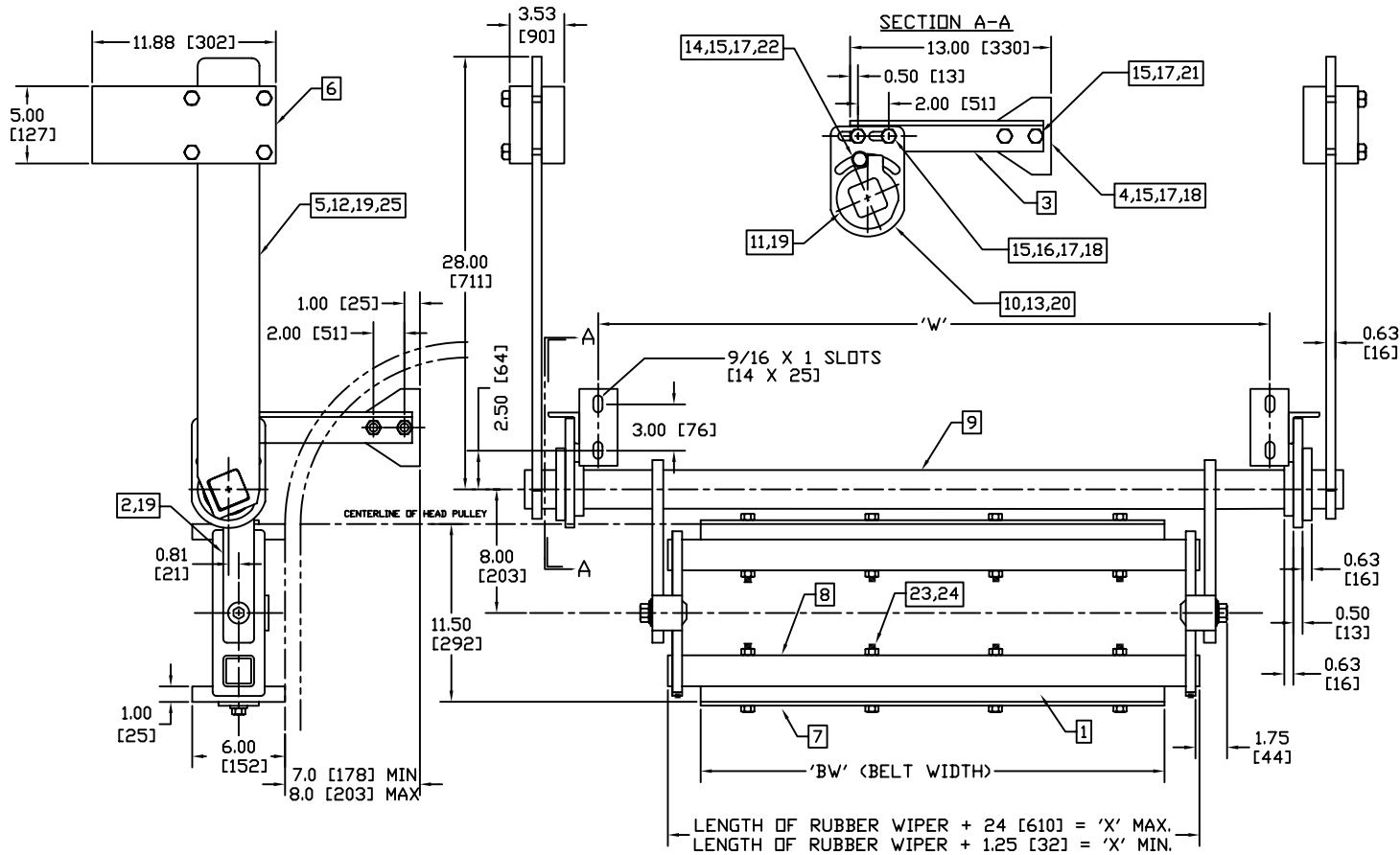


DWG. NO.	D0140001	SHT.	1	REV.	C
REVISIONS					
REV.	E.C.D.	DESCRIPTION	DATE	BY	APP'D
C	2322	UPDATE PARTS LIST / SUPPORT TUBE REFS	05/02/05	GL	JK

1. MOUNT THE CLEANER SO THAT THE LEADING EDGE OF THE WIPER (1) IS DIRECTLY BELOW THE CENTER OF THE HEAD PULLEY AND THE BLADE ARM, (2) IS PARALLEL WITH THE BELT.
2. LOCATE THE COUNTERWEIGHT ARMS, (5) TO LIE APX. HORIZONTAL.
3. SLIDE COUNTERWEIGHT (6) ONTO ARMS AND POSITION FOR MOST EFFECTIVE CLEANING.
4. LOCATE THE STOP (4), TO PREVENT THE WIPER SUPPORT FROM CONTACTING THE BELT AS THE WIPER WEARS.



LENGTH OF RUBBER WIPER + 24 [610] = 'X' MAX.
 LENGTH OF RUBBER WIPER + 1.25 [32] = 'X' MIN.

QTY	ITEM	MATL	PART	DRAWING	DESCRIPTION	QTY
25	20370001	A0370007			NAMEPLATE CCC BELT CLEANER	1
24	22014203	--			3/8-16 LOCKNUT N/I Z/P	'F'
23	22011212	--			3/8-16 X 4 HHCS Z/P	'F'
22	22011305	--			1/2-13 X 2 CARRIAGE BOLT Z/P	2
21	22041301	--			1/2-13 X 1 1/2 HHCS Z/P	4
20	22011209	--			3/8-16 X 1 SQ HD SET SCREW Z/P	2
19	22011150	--			5/16-18 X 5/8 SET SCREW Z/P	18
18	22011302	--			1/2-13 X 2 HHCS Z/P	8
17	22014401	--			1/2-13 HEX NUT Z/P	14
16	22013103	--			1/2 IN FLATWASHER Z/P	4
15	22013502	--			1/2" LOCKWASHER Z/P	14
14	20130001	A0130001			STOP	2
13	20130003	B0130004			MLOUNTING PLATE	2
12	22016101	--			#2 X 1/4 DRIVE RIVET SST	2
11	20130030	C0130002			STOP DOG	2
10	20190001	A0190005			COLLAR	2
9	'E'	B0130005			PIVOT TUBE	1
8	'C'	'D'			SUPPORT TUBE	2
7	'B'	CS110022			BACKING BAR	2
6	20130006	B0130003			COUNTERWEIGHT ASSEMBLY	2
5	20130032	C0130003			COUNTERWEIGHT ARM	2
4	20120001	A0120001			HANGER BRACKET	2
3	40110002	CS110020			HANGER BAR	2
2	20140008	--			BLADE ARM AND TOGGLE PLATE ASSY.	2
1	'A'	CS110017			WIPER	2

ITEM MATL/PART		DRAWING	DESCRIPTION	QTY
THIS DRAWING IS COMPUTER GENERATED.				
DWN	CLO	DATE	CONVEYOR COMPONENTS CO.	
CKD	DATE	130 SELTZER RD, CROSWELL, MI 48422		
APD	CFS	DATE	CWD COUNTERWEIGHTED BELT CLEANER	
THIS PRINT IS THE PROPERTY OF CONVEYOR COMPONENTS CO. AND MUST NOT BE USED IN WHOLE, OR PART WITHOUT WRITTEN PERMISSION.		PART NO.	DWG. NO.	REV.
		CWD	D0140001	C
PLEASE RETURN ON DEMAND.		SCALE	1/4"=1"	SHT. 1-1

DWG. NO. D0140001

SHT. 1 OF 1

REV. C

STANDARD MODELS	DIMENSION TABLE					PART 'A'	PART 'B'	PART 'C'	DWG 'D' (PART 'C')	PART 'E'	QTY 'F'
	'BW'	MIN	MAX	MIN	MAX						
CWD-12	12[305]	10[254]	32[813]	13.25[337]	36[914]	W/B-12	40110037	40110003	CS110035	20130007	4
CWD-16	16[406]	14[356]	36[914]	17.25[438]	40[1016]	W/B-16	40110039	40110005	CS110035	20130008	4
CWD-18	18[457]	16[406]	38[965]	19.25[489]	42[1067]	W/B-18	40110040	40110006	CS110035	20130009	6
CWD-20	20[508]	18[457]	40[1016]	21.25[540]	44[1118]	W/B-20	40110041	40110007	CS110035	20130010	6
CWD-24	24[610]	22[559]	44[1118]	25.25[641]	48[1219]	W/B-24	40110042	40110008	CS110035	20130011	6
CWD-30	30[762]	28[711]	50[1270]	31.25[794]	54[1372]	W/B-30	40110043	40110009	DS110021	20130012	8
CWD-36	36[914]	34[864]	56[1422]	37.25[946]	60[1524]	W/B-36	40110044	40110010	DS110021	20130013	8
CWD-42	42[1067]	40[1016]	62[1575]	43.25[1099]	66[1676]	W/B-42	40110045	40110011	DS110021	20130014	8
CWD-48	48[1219]	46[1168]	68[1727]	49.25[1251]	72[1829]	W/B-48	40110046	40110012	DS110021	20130015	10
CWD-54	54[1372]	52[1321]	74[1880]	55.25[1403]	78[1981]	W/B-54	40110047	40110013	DS110021	20130016	12
CWD-60	60[1524]	58[1473]	80[2032]	61.25[1556]	84[2134]	W/B-60	40110048	40110014	DS110021	20130017	12
CWD-72	72[1829]	70[1778]	92[2337]	73.25[1861]	96[2438]	W/B-72	40110049	40110015	DS110021	20130018	14