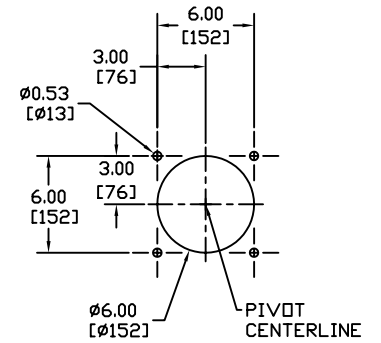


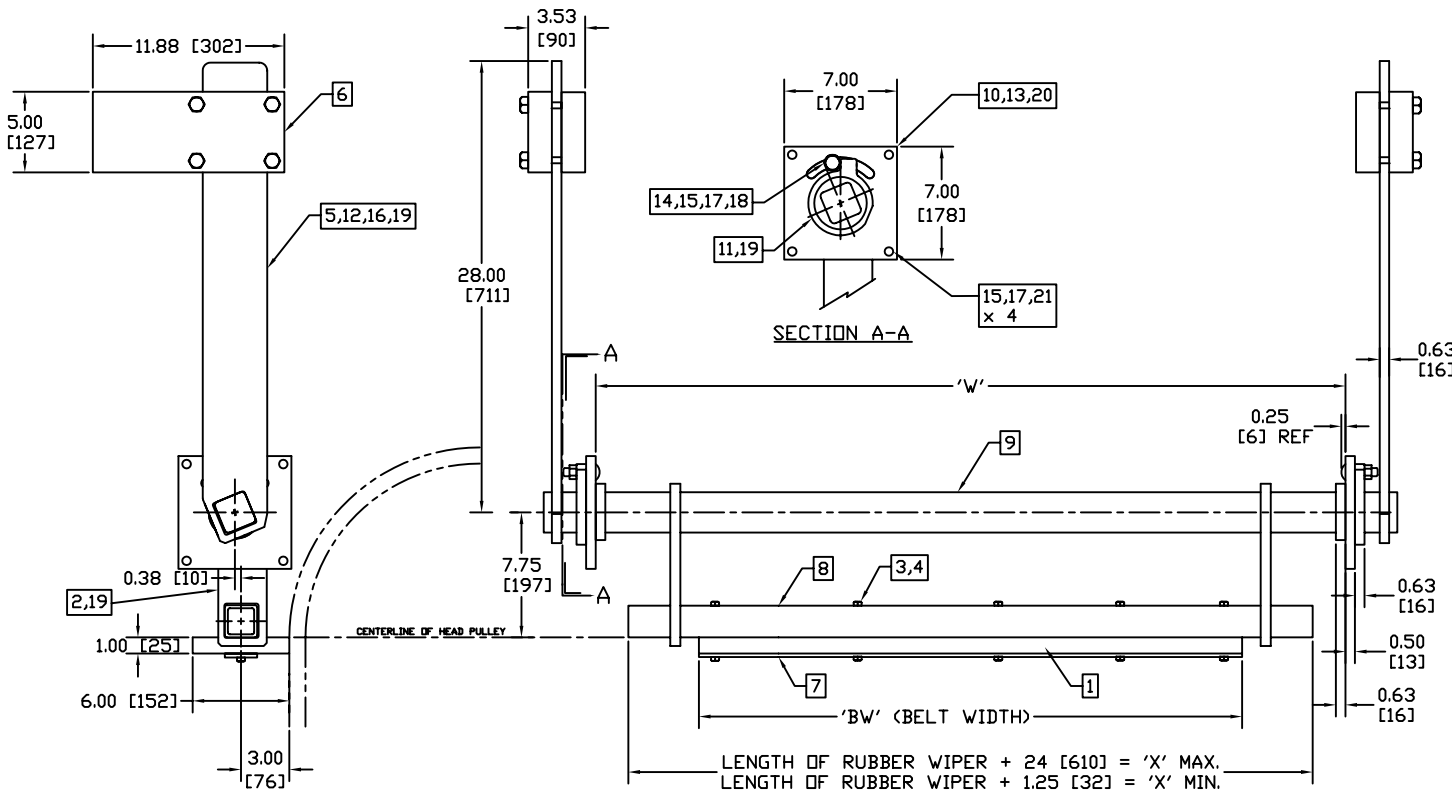
DWG. NO. D0130002		SMT. 1/1	REV. 1
REVISIONS			
REV.	E.C.D.	DESCRIPTION	DATE
B	2322	UPDATE PARTS LIST / SUPPORT TUBE REFS	05/02/05
GL	JK	APP'D	

1. MOUNT THE CLEANER SO THAT THE LEADING EDGE OF THE WIPER ① IS DIRECTLY BELOW THE CENTER OF THE HEAD PULLEY AND THE BLADE ARM, ② IS PARALLEL WITH THE BELT.
2. LOCATE THE COUNTERWEIGHT ARMS, ⑤ TO LIE APX. HORIZONTAL.
3. SLIDE COUNTERWEIGHT ⑥ ONTO ARMS AND POSITION FOR MOST EFFECTIVE CLEANING
4. LOCATE THE STOP ⑨, TO PREVENT THE WIPER SUPPORT FROM CONTACTING THE BELT AS THE WIPER WEARS.

**MOUNTING HOLE PATTERN FOR BOTH SIDES OF UNIT**



ALL DIMS IN [ ] ARE IN MILLIMETERS.



STANDARD MODELS	DIMENSION TABLE				PART 'A'	PART 'B'	PART 'C'	DWG 'D' (PART 'C')	PART 'E'	QTY 'F'	
	'BW'	'W'		'X'							
	MIN	MAX	MIN	MAX							
CW-12F	12[305]	16[406]	37[940]	13.25[337]	36[914]	WB-12	40110037	40110033	CS110035	20130007	2
CW-16F	16[406]	20[508]	41[1041]	17.25[438]	40[1016]	WB-16	40110039	40110005	CS110035	20130008	2
CW-18F	18[457]	22[559]	43[1092]	19.25[489]	42[1067]	WB-18	40110040	40110006	CS110035	20130009	3
CW-20F	20[508]	24[610]	45[1143]	21.25[540]	44[1118]	WB-20	40110041	40110007	CS110035	20130010	3
CW-24F	24[610]	28[711]	49[1245]	25.25[641]	48[1219]	WB-24	40110042	40110008	CS110035	20130011	3
CW-30F	30[762]	34[864]	53[1397]	31.25[794]	54[1372]	WB-30	40110043	40110009	DS110021	20130012	4
CW-36F	36[914]	40[1016]	61[1549]	37.25[946]	60[1524]	WB-36	40110044	40110010	DS110021	20130013	4
CW-42F	42[1067]	46[1168]	67[1702]	43.25[1099]	66[1676]	WB-42	40110045	40110011	DS110021	20130014	4
CW-48F	48[1219]	52[1321]	73[1854]	49.25[1251]	72[1829]	WB-48	40110046	40110012	DS110021	20130015	5
CW-54F	54[1372]	58[1473]	79[2007]	55.25[1403]	78[1981]	WB-54	40110047	40110013	DS110021	20130016	6
CW-60F	60[1524]	64[1626]	85[2159]	61.25[1556]	84[2134]	WB-60	40110048	40110014	DS110021	20130017	6
CW-72F	72[1829]	76[1930]	97[2464]	73.25[1861]	96[2438]	WB-72	40110049	40110015	DS110021	20130018	7

21	22011302	--	1/2-13 X 2 HHCS Z/P	8
20	22011209	--	3/8-16 X 1 SQ HD SET SCREW Z/P	2
19	22011150	--	5/16-18 X 5/8 SET SCREW Z/P	14
18	22011305	--	1/2-13 X 2 CARRIAGE BOLT Z/P	2
17	22014401	--	1/2-13 HEX NUT Z/P	10
16	20370001	A0370007	NAMEPLATE CCC BELT CLEANER	1
15	22013502	--	1/2" LOCKWASHER Z/P	10
14	20130001	A0130001	STOP	2
13	20130002	A0130002	FLANGE MOUNTING PLATE	2
12	22016101	--	#2 X 1/4 DRIVE RIVET SST	2
11	20130030	C0130002	STOP DOG	2
10	20190001	A0190005	COLLAR	2
9	'E'	B0130005	PIVOT TUBE	1
8	'C'	'D'	SUPPORT TUBE	1
7	'B'	CS110022	BACKING BAR	1
6	20130006	B0130003	COUNTERWEIGHT ASSEMBLY	2
5	20130032	C0130003	COUNTERWEIGHT ARM	2
4	22014203	--	3/8-16 LOCKNUT N/I Z/P	'F'
3	22011212	--	3/8-16 X 4 HHCS Z/P	'F'
2	20130031	C0130001	BLADE ARM	2
1	'A'	CS110017	WIPER	1

ITEM	MATL/PART	DRAWING	DESCRIPTION	QTY
THIS DRAWING IS COMPUTER GENERATED.				
DWN	CEG	DATE	CONVEYOR COMPONENTS CO.	
OKD		DATE	130 SELTZER RD, CROSWELL, MI 48422	
APD	JK	DATE	CW-F FLANGE MOUNT BELT CLEANER	
THIS PRINT IS THE PROPERTY OF CONVEYOR COMPONENTS CO. AND MUST NOT BE USED IN WHOLE, OR PART WITHOUT WRITTEN PERMISSION.				
PLEASE RETURN ON DEMAND.		SCALE	NONE	
PART NO.	DWG. NO.	REV.		
CW-F	D0130002	B		
				SHT. 1-1

DWG. NO. D0130002