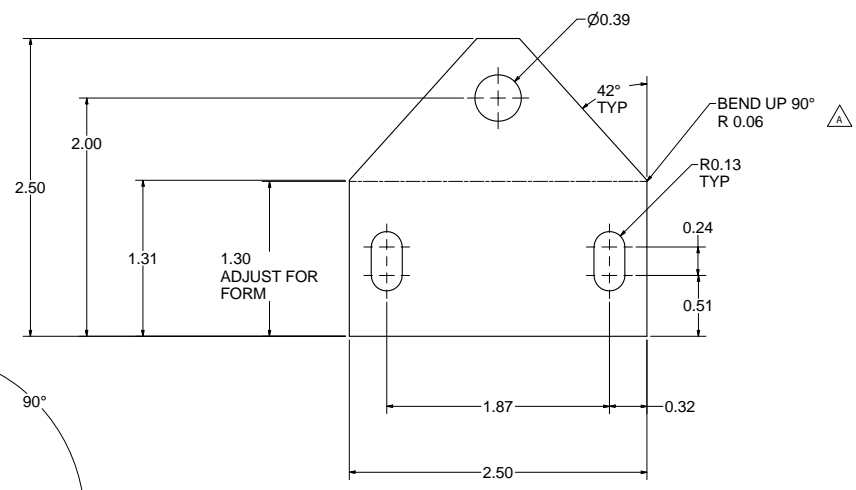
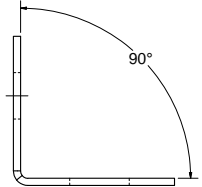
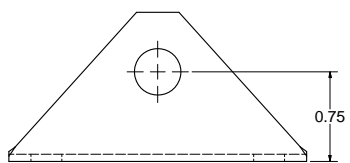
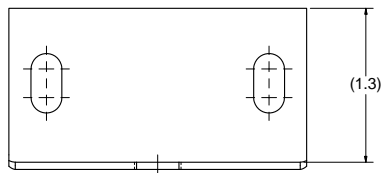
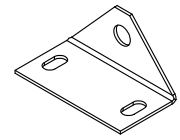


REV	ECO	DESCRIPTION	DATE	BY	APPD
A	3679	ADD BEND INFORMATION, UPDATE ZINC PLATING SPEC.	9/21/2011	GL	JK



MATL: 22027317, 16 GA CR SHEET, 0.043 SF REQD.

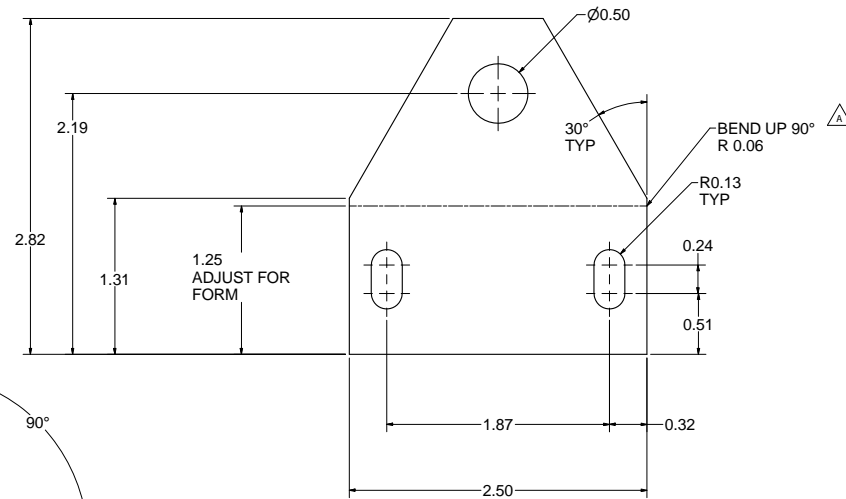
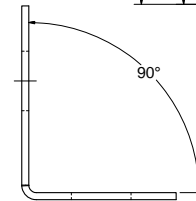
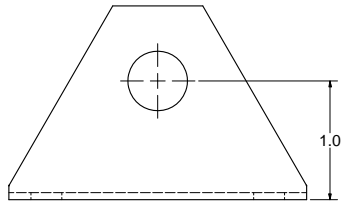
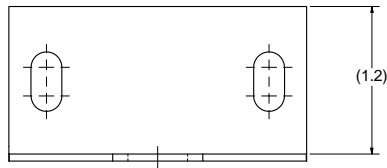
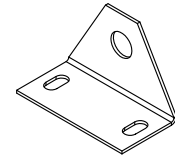


ZINC PLATE: ELECTROLYTIC ZINC,  
COMMERCIAL QUALITY,  
0.00015-0.0002" THICK,  
PER ASTM B633

FORMED PART: 20080130  
ZINC PLATING: 20080144  
FINISHED PART: RMS-8M

DRAWN EL	12/11/1997	 130 Seltzer Road Croswell, Michigan, U.S.A. 48422
CHECKED JK	9/22/2011	
APPROVED JK	12/11/1997	
PART RMS-8M	8 MM SENSOR BRACKET FOR RMS	
<small>THIS PRINT IS PROPERTY OF CONVEYOR COMPONENTS CO., AND MAY NOT BE USED IN WHOLE OR PART WITHOUT WRITTEN PERMISSION.</small>		
SIZE D	DWG NO A0050020.dwg	REV A
SCALE	SHEET 1 OF 1	

REV	ECO	DESCRIPTION	DATE	BY	APPD
A	3679	ADD BEND INFORMATION UPDATE ZINC PLATING SPEC	9/21/2011	GL	JK



MATL: 22027317, 16 GA CR SHEET, 0.049 SF REQD.

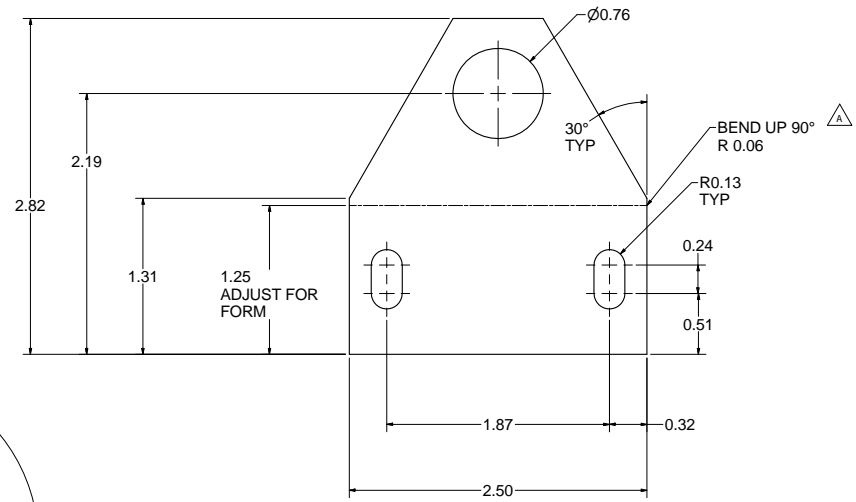
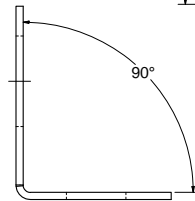
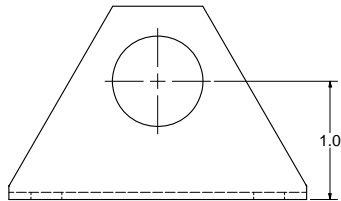
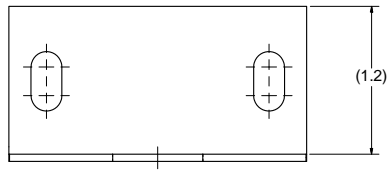
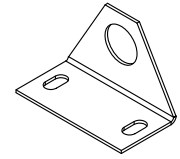


ZINC PLATE: ELECTROLYTIC ZINC,  
COMMERCIAL QUALITY,  
0.00015-0.0002" THICK,  
PER ASTM B633

FORMED PART: 20080127  
ZINC PLATING: 20080145  
FINISHED PART: RMS-12M

DRAWN	EL	12/11/1997	Conveyor Components Company 130 Seltzer Road Crosswile, Michigan, U.S.A. 48422		
CHECKED	JK	9/22/2011	TITLE		
APPROVED	JK	12/11/1997	12 MM SENSOR BRACKET FOR RMS		
PART	RMS-12M		Drawing is computer generated, and print might not be to scale.		
THIS PRINT IS PROPERTY OF CONVEYOR COMPONENTS CO., AND MAY NOT BE USED IN WHOLE OR PART WITHOUT WRITTEN PERMISSION.			SIZE	DWG NO	REV
			D	A0050021.dwg	A
			SCALE	SHEET 1 OF 1	

REV	ECO	DESCRIPTION	DATE	BY	APPD
A	3679	ADD BEND INFORMATION UPDATE ZINC PLATING SPEC.	9/21/2011	GL	JK



MATL: 22027317, 16 GA CR SHEET, 0.049 SF REQD.

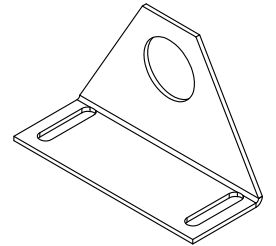
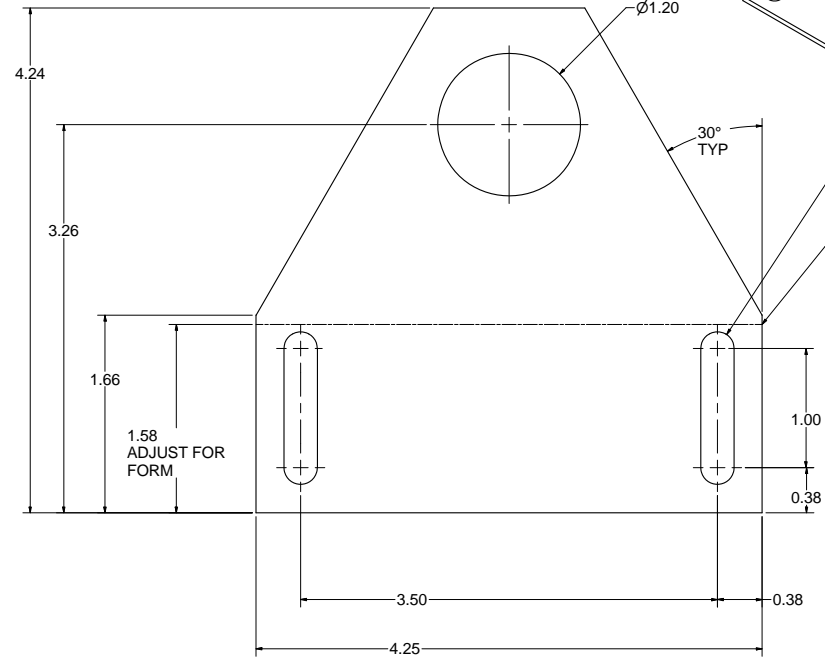
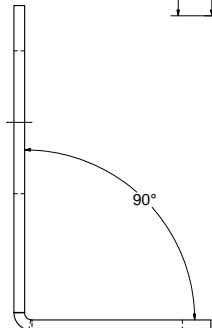
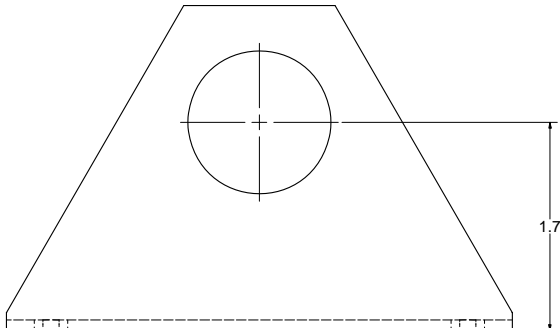
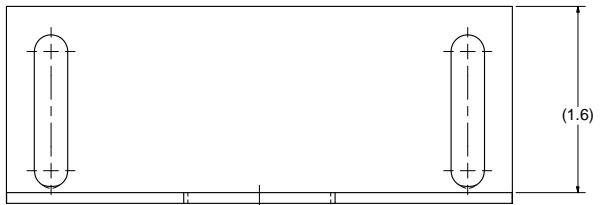


ZINC PLATE: ELECTROLYTIC ZINC,  
COMMERCIAL QUALITY,  
0.00015-0.0002" THICK,  
PER ASTM B633

FORMED PART: 20080131  
ZINC PLATING: 20080146  
FINISHED PART: RMS-18M

DRAWN EL	12/11/1997	 130 Seltzer Road Crossett, Michigan, U.S.A. 48422
CHECKED JK	9/22/2011	
APPROVED JK	12/11/1997	
PART RMS-18M	18 MM SENSOR BRACKET FOR RMS	
<small>THIS PRINT IS PROPERTY OF CONVEYOR COMPONENTS CO., AND MAY NOT BE USED IN WHOLE OR PART WITHOUT WRITTEN PERMISSION.</small>		
SIZE D	DWG NO A0050022.dwg	REV A
SCALE	SHEET 1 OF 1	

REV	ECO	DESCRIPTION	DATE	BY	APPD
A	3679	ADD BEND INFORMATION, UPDATE ZINC PLATING SPEC.	9/21/2011	GL	JK



MATL: 20269001, 13 GA CR SHEET, 0.125 SF REQD.



ZINC PLATE: ELECTROLYTIC ZINC,  
COMMERCIAL QUALITY,  
0.00015-0.0002" THICK,  
PER ASTM B633

FORMED PART: 20080132  
ZINC PLATING: 20080147  
FINISHED PART: RMS-30M

DRAWN		12/11/1997		 130 Selzer Road Crossville, Michigan, U.S.A. 48422	
CHECKED	JK	9/22/2011	TITLE	30 MM SENSOR BRACKET FOR RMS	
APPROVED	JK	12/11/1997	SIZE	D	REV A
PART		RMS-30M		Drawing is computer generated, and print might not be to scale.	
THIS PRINT IS PROPERTY OF CONVEYOR COMPONENTS CO., AND MAY NOT BE USED IN WHOLE OR PART WITHOUT WRITTEN PERMISSION.		SCALE	DWG NO	A0050023.dwg	
			SHEET 1 OF 1		