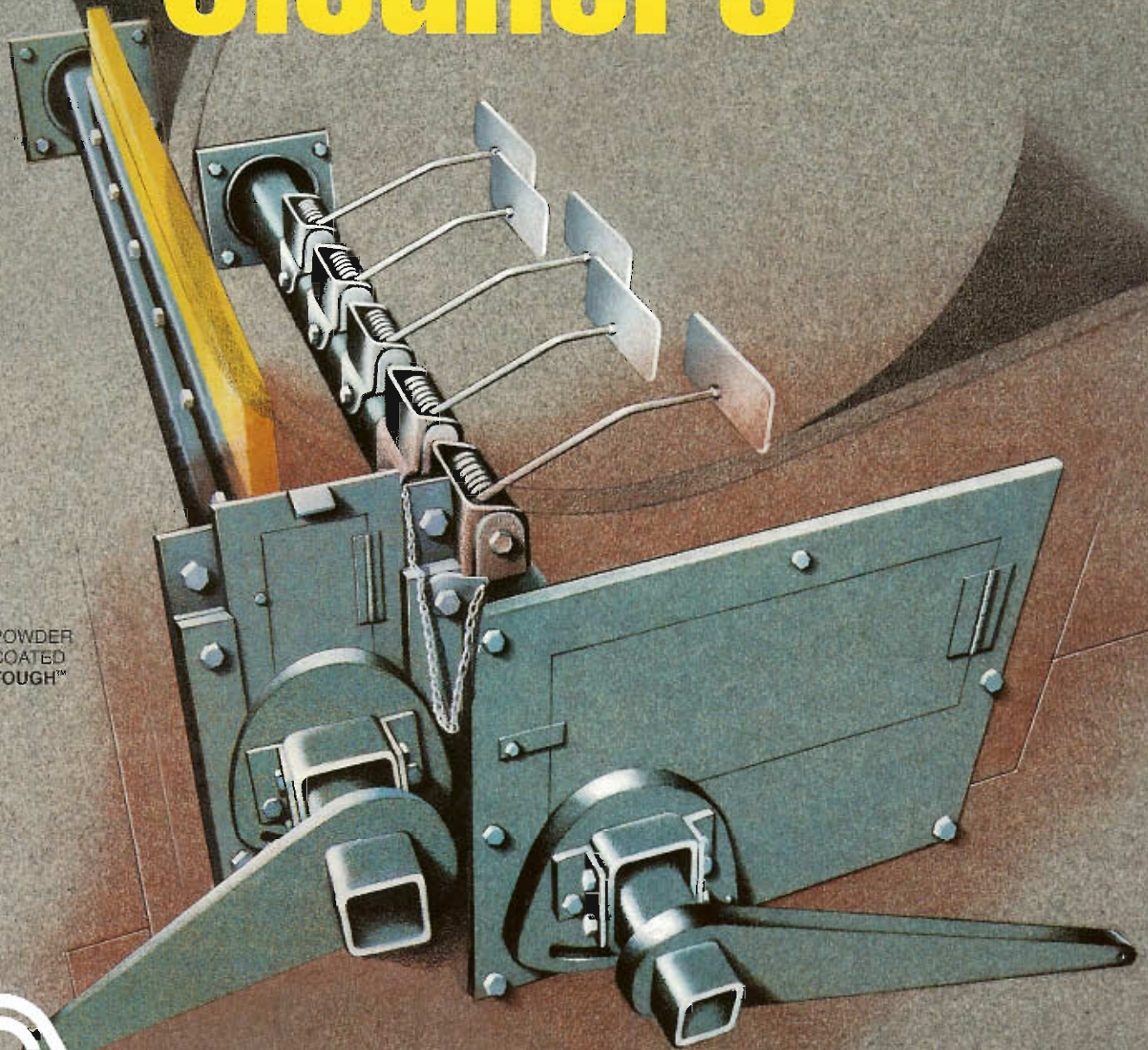


# Conveyor Belt Cleaners



 POWDER  
COATED  
TOUGH™



**CONVEYOR COMPONENTS COMPANY**

130 SELTZER RD. • P.O. BOX 167 • CROSWELL, MI 48422

810-679-4211 • TOLL FREE 800-233-3233 • FAX 810-679-4510



# MODEL RLP

## Urethane/Blade Type Belt Cleaner

### Maximum Cleaning Effectiveness—Minimum Servicing

The Model RLP is uniquely designed for maximum conveyor belt cleaning efficiency and a minimum of maintenance downtime. Its specially formulated urethane wiper blade is mounted beneath the head pulley to scrape away most types of troublesome carryover. This eliminates potential belt wear and misalignment, as well as accumulation of carryover under the return run of the belt.

Easy to install and easy to maintain, the high-efficiency wiper blade is mounted on our unique roll-on/roll-off servicing mechanism (see phot B, page 4). This system allows the cleaner to roll from under the conveyor where one person can easily and safely make adjustments or replacements. The entire roller mechanism is covered by a sturdy steel tube to protect it from jamming caused by contamination and corrosion from carryover materials. In many cases, this eliminates the need for expensive stainless steel construction.

Built to last, it features heavy duty 2 1/2"x3 1/2" square tubing for the blade support and durable 1/2" thick steel for the mounting plates. Quick, positive adjustment is accomplished via the rotary pressure handle. It keeps the cleaner in constant contact with the belt (see illustration at right), and reduces the necessity for frequent underbelt inspections. It all adds up to big savings in maintenance and related downtime.

### Adjustment Mechanisms

Choose one of the following arrangements:

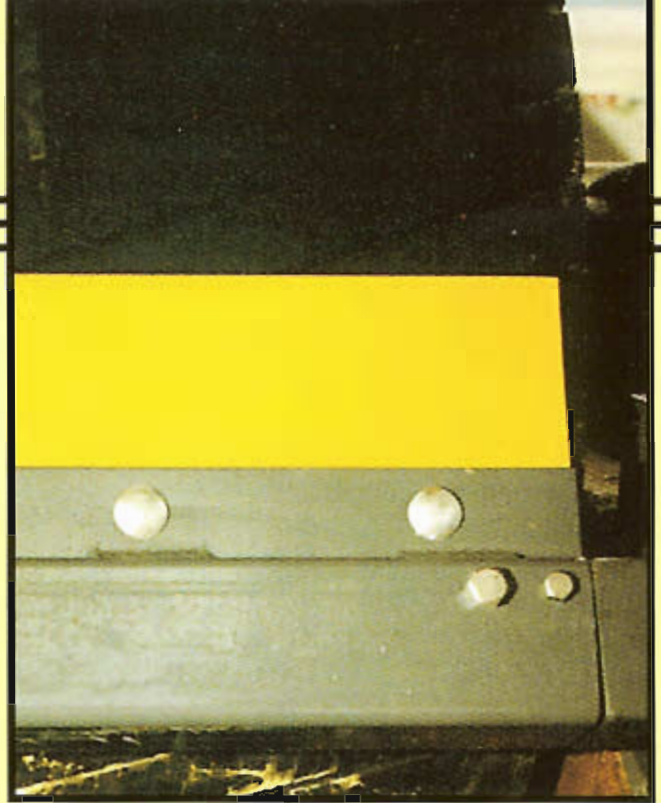
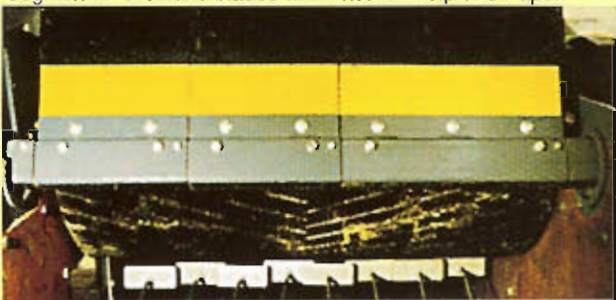
1. Pressure Handle Adjustment (Standard)—Single handle adjustment rotates the blade into contact with the belt. (See color diagram at right).
2. Ratchet Adjustment (Optional)—Provides a fast, positive ratchet assembly for easy up and down tensioning. Each side operates independently.

### Replacement Blades

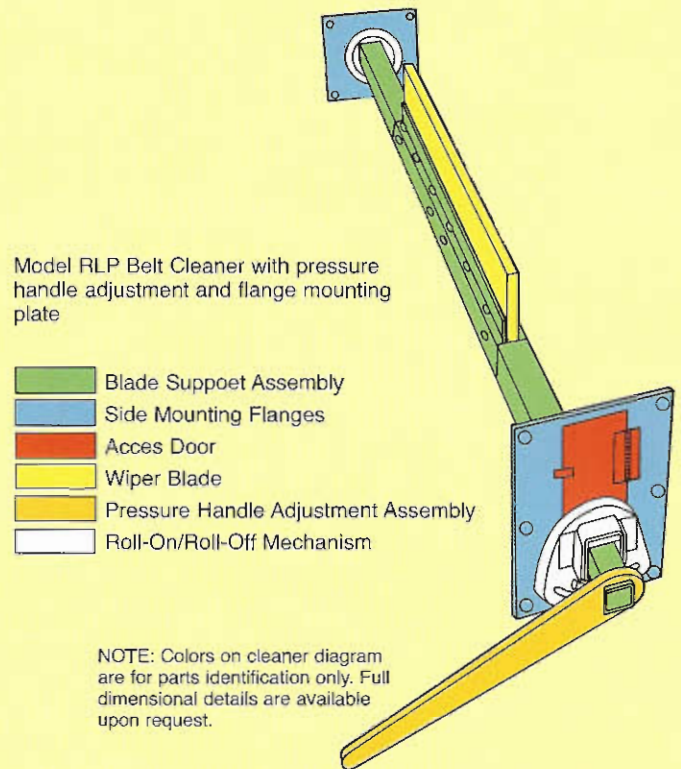
To order blades, first find your cleaner size and then amount of sections indicated under 12" or 18" column.

CLEANER SIZE	12" SECTION	18" SECTION
12"	1	0
18"	0	1
24"	2	0
30"	1	1
36"	0	2
42"	2	1
48"	1	2
54"	0	3
60"	2	2
66"	1	3
72"	0	4
84"	1	4

Segmented Urethane blades at Brunswick Pulp and Paper.



Model RLP Cleaner removing sticky wood chips at Brunswick Pulp and Paper—Brunswick, Georgia.



### Mounting Arrangements

Two mounting arrangements are available to fit most conveyor applications.

1. Flange Mounting with Access Door (Standard)—for use on enclosed conveyors with a discharge chute.
2. Hanger Mount (Optional)—For use on open conveyor frames.

### Mounting Arrangements

- 90 Durometer Urethane (Standard)
- 80 Durometer Rubber (Optional)



# MODEL RFA Spring Arm Type Cleaner

## The Cleaner For Tough Abrasive Materials

For really tough jobs like wet, sticky wood chips or fine abrasive sinter, this is the cleaner to choose. The Model RFA Cleaner is a sturdy coil spring-arm/blade cleaner that really gets down to work. Almost nothing gets by the individual heavy-duty blades to cause idler arm build-up and eventual belt misalignment or wear.

Model RFA permits independent adjustment of each blade arm to match the exact contour of the belt and apply just the right cleaning pressure to remove traces of carryover. The unit operates on all types of conveyor belts and will not damage mechanical splices, vulcanized splicing or metal fasteners.

Just like the Model RLP, it features the unique roll-on/roll-off servicing mechanism (see Pg. 4) Changing blades or fine tuning the arm adjustment is a snap, and requires just one person to accomplish the maintenance procedures. Also like the RLP, the entire roller mechanism is protected by a sturdy steel tube which prevents material build-up on the roller elements. This prevents jamming or sticking and eliminates the need for costly stainless steel construction.

## Adjustment Mechanism

Choose one of the following arrangements:

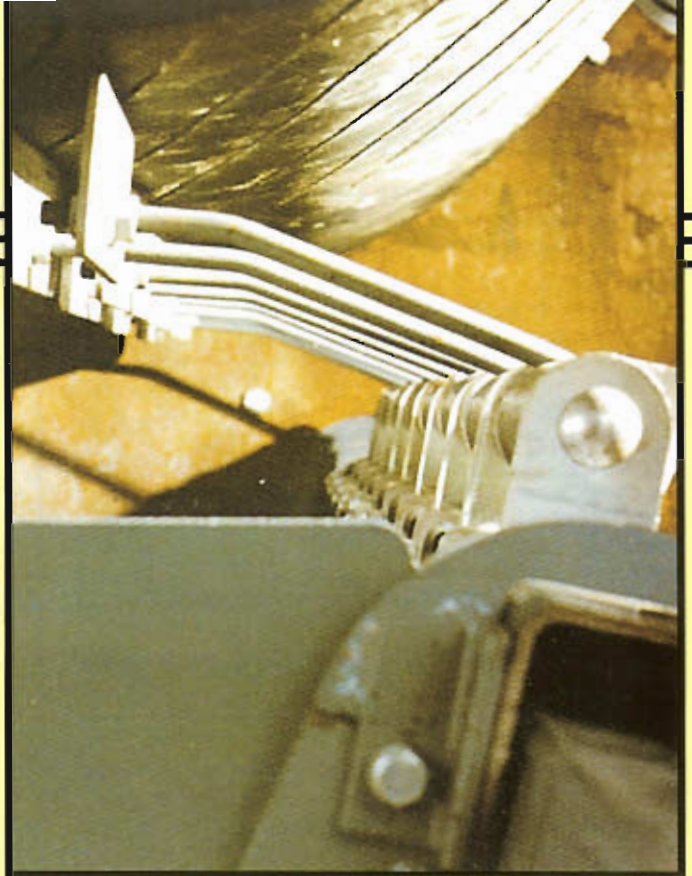
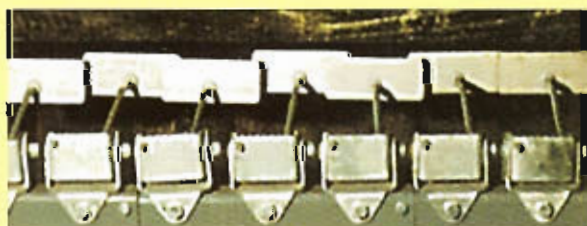
1. Pressure Handle Adjustment (Standard) — Single handle adjustment rotates the blades into contact with the belt. (See color diagram at right).
2. Ratchet Adjustment (Optional) — Provides a fast, positive ratchet assembly for easy up and down tensioning. Each side operates independently.

## Mounting Arrangements

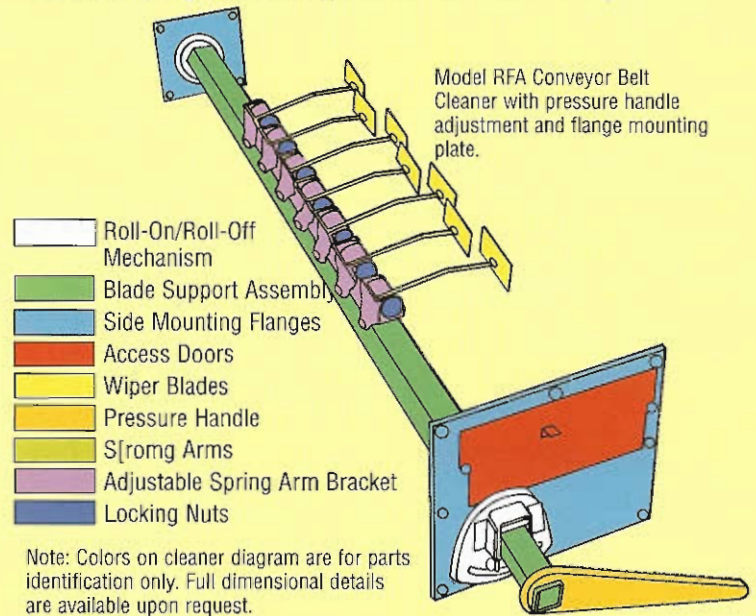
Two mounting arrangements are available to fit most conveyor applications.

1. Range Mounting with Access Door (Standard) — for use on enclosed conveyors with a discharge chute.
2. Hanger Mount (Optional) — for use on open conveyor frames.

Conveyor supervisor at Union Camp—Savannah, Georgia, adjusts RFA Cleaner blade pressure with rotary handle.



RFA Coil Spring-Arm/Blade Type Cleaner shown in cleaning position



## Wiper Blade Options

The Model RFA Cleaner is available with a variety of wiper blades. Select the blade type that best meets your job/material requirements from the handy guide below or call our trained sales staff for assistance.

### WIPER BLADE SELECTION GUIDE:

**RFA-H Spring Steel Blades**—good general use blade for most applications.

**RFA-S Stainless Steel Blades**—Generally used with corrosive materials.

**RFA-N Nickel Coated Stainless Steel Blades**—also for use with corrosives. Longer average work life than stainless.

**RFA-U 90 Durometer Urethane Blades**—also for use with wet materials. Longer average work life than rubber blades.

**RFA-C Ceramic Blades**—for use with abrasive materials. Offer extremely long cleaning life.

**RFA-T Tungsten Carbide Blades**—for really tough abrasives and sticky materials. The hardest blades available.



# Unique Roll-On/Roll-Off and More

## Cleaner Service Without a Shutdown

The roll-on/roll-off system allows a conveyor operator to service the cleaner himself, reducing overall labor costs. Both the Model RLP and RFA feature this timesaving system.

Servicing is easy. Loosening two bolts permits the cleaner assembly to roll out from under the conveyor for adjustments or changes. And, a protective steel tube protects the roller assembly from carryover build-up. Thus, jamming and sticking of the assembly are eliminated. Extensively tested in field applications, this feature wins high praise from maintenance supervisors everywhere!

NOTE: For safety purposes, it may not be advisable to service cleaners with the conveyor running.

## Blade Supports

The Model RLP and RFA Cleaners are furnished with sectional blade support assemblies. For servicing, these sections are rolled from underneath the conveyor and unbolted one at a time. This permits service of the system in limited space (See photos A and B at right).

## Access/Inspection Doors

For RLP and RFA units mounted in hoods and chutes, an easy-view access door allows the operator to instantly inspect the system for proper alignment and cleaner wear. The door also serves as the means for rolling out the cleaners for servicing.

## Individually Adjustable Spring Arms

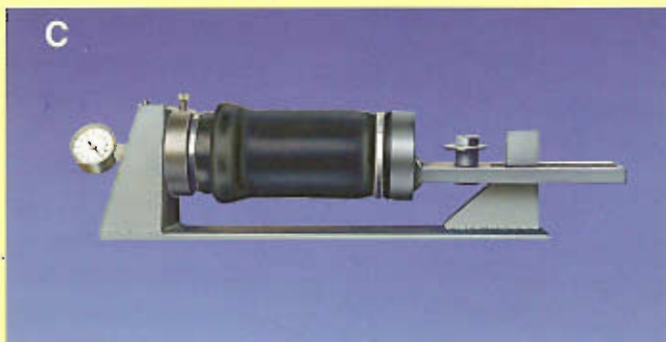
The Model RFA Cleaner incorporates special coil-type spring arms which individually adjust to the contour of the belt. This distributes cleaning pressure more evenly across the entire belt surface.

## Mounting Adaptability

Model RLP and RFA Cleaners are simple to mount and service. Two mounting arrangements adapt these cleaners to most conveyor applications. The flange mounting is designed to use on enclosed conveyors while the hanger mount is particularly suited for open conveyor frames. For detailed mounting data and dimensional information, please contact our sales department.

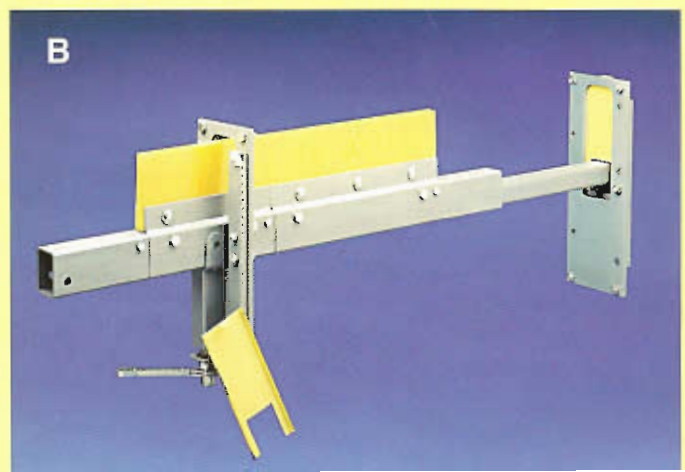
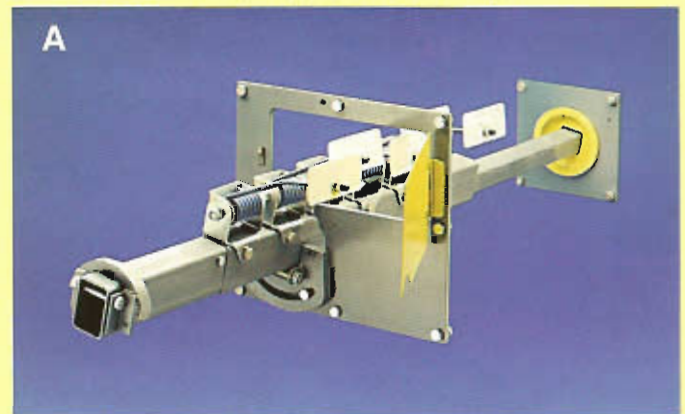
## Optional Air Tensioning Unit

The Model RLP and RFA cleaners can be supplied with an air tensioning unit (see photo C below). This option ensures that the blades are in constant contact with the conveyor belt. Periodic visual inspection of the air pressure gauge assures that the cleaners are accurately tensioned.



Model RLP and RFA Cleaners, with Flange Mounting Plates, installed on a conveyor discharge chute at Brunswick Pulp and Paper in Brunswick, Georgia.

The unique telescoping cleaner assembly allows the cleaner to roll out from under the belt for inspection and servicing.





# THE NEW GENERATION

## Two Cleaners Mounted Back to Back

- Roll-On/Roll-Off Mechanism
- Blade Support Assemblies
- Side Flange Assemblies (RFP 7 RFA)
- Access Doors
- Wiper Blades
- Pressure Handle (RFA 7 RLP)
- S[romg Arms
- Adjustable Spring Arm Bracket
- Locking Nuts

### A Dynamic Cleaning Combination

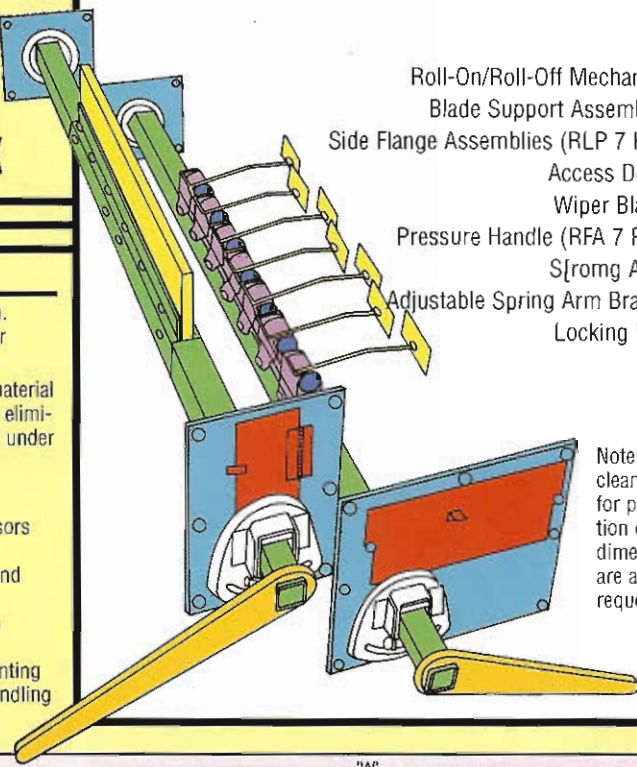
Your belt cleaning effectiveness can double with this dynamic cleaning system. Based on proven technology, the dual cleaner combination strips away carryover materials better than most single units now available.

Up front, the primary cleaner is a urethane scraper that removes heavy bulk material at the head pulley. Following right behind is a heavy duty spring arm cleaner for eliminating leftover. Both cleaners are built to perform with all types of materials and under the worst conditions.

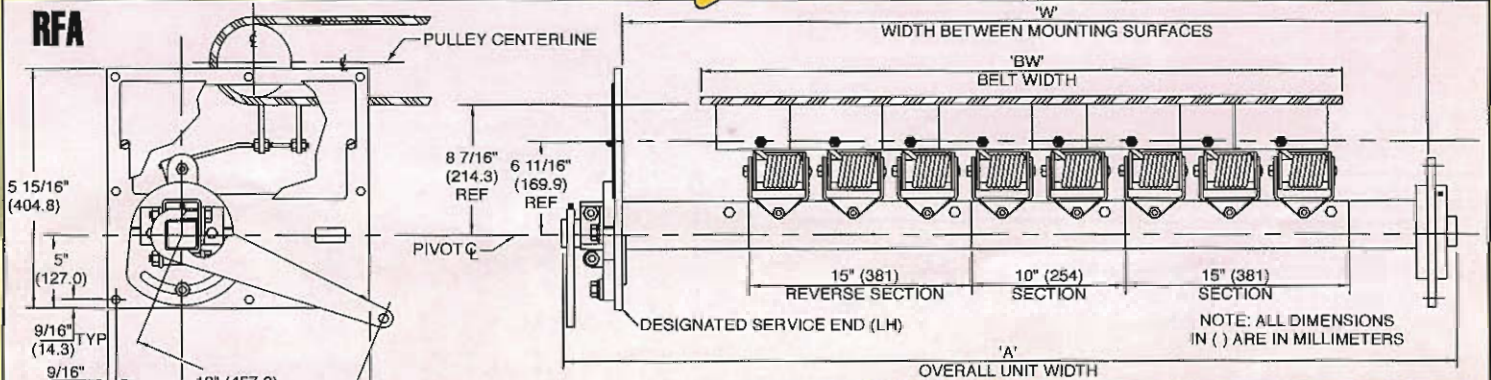
Together, these two cleaners provide the following advantages:

- Reduced downtime for material cleanup around the conveyor system. Supervisors know just how costly these cleanups can be.
- Simplified inspection and servicing procedures. One employee can maintain and service the cleaners quicker than traditional systems.
- Positive, hassle-free adjustment. Cleaner tensioning is easy to set and easy to maintain. And, the access doors make periodic checks simple and convenient.

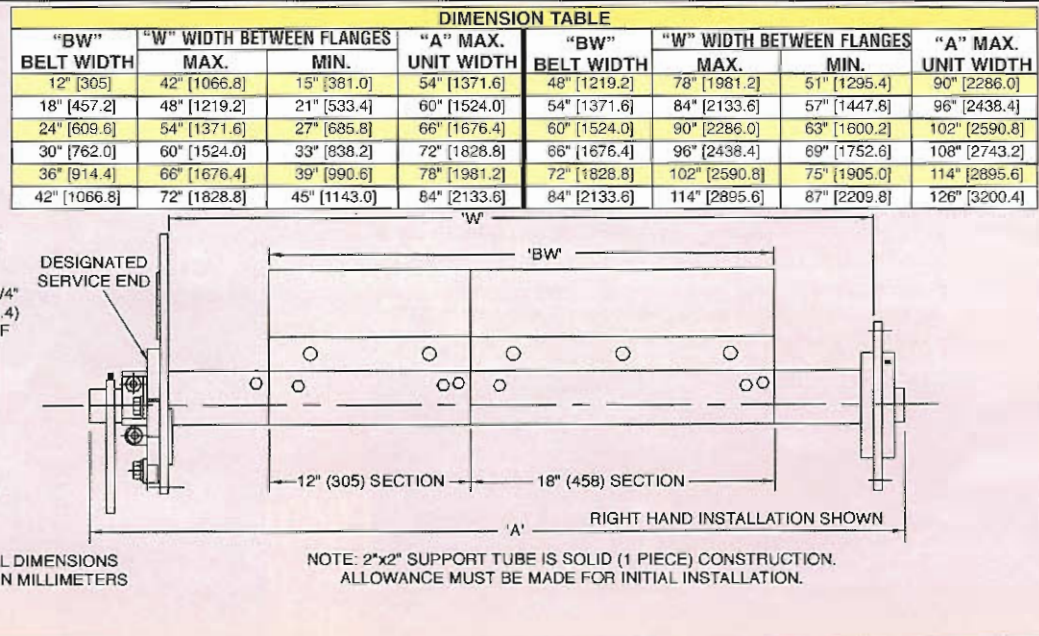
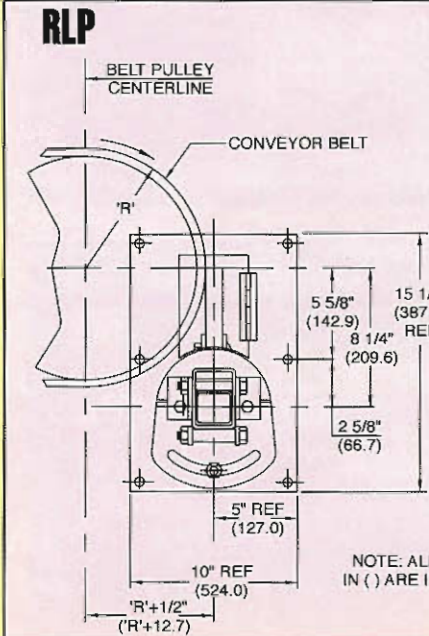
The dual cleaning system is both effective and economical. Designed for mounting on all conveyor frames and chutes, it's field proven at most types of material handling facilities in operation today.



Note: Colors on cleaner diagram are for parts identification only. Full dimensional details are available upon request.



"BW" BELT WIDTH	"W" WIDTH BETWEEN FLANGES		"A" MAX. UNIT WIDTH	"BW" BELT WIDTH	"W" WIDTH BETWEEN FLANGES		"A" MAX. UNIT WIDTH
	MAX.	MIN.			MAX.	MIN.	
12" [304.8]	42" [1066.8]	15" [381.0]	54" [1371.6]	54" [1371.6]	84" [2133.6]	57" [1447.8]	96" [2438.4]
18" [457.2]	48" [1219.2]	21" [533.4]	60" [1524.0]	60" [1524.0]	90" [2286.0]	63" [1600.2]	102" [2590.8]
24" [609.6]	54" [1371.6]	27" [685.8]	66" [1676.4]	66" [1676.4]	96" [2438.4]	69" [1752.6]	108" [2743.2]
30" [762.0]	60" [1524.0]	33" [838.2]	72" [1828.8]	72" [1828.8]	102" [2590.8]	75" [1905.0]	114" [2895.6]
36" [914.4]	66" [1676.4]	39" [990.6]	78" [1981.2]	78" [1981.2]	108" [2743.2]	81" [2057.4]	120" [3048.0]
42" [1066.8]	72" [1828.8]	45" [1143.0]	84" [2133.6]	84" [2133.6]	114" [2895.6]	87" [2209.8]	126" [3200.4]
48" [1219.2]	78" [1981.2]	51" [1295.4]	90" [2286.0]	96" [2438.4]	126" [3200.4]	99" [2514.6]	138" [3505.2]



"BW" BELT WIDTH	"W" WIDTH BETWEEN FLANGES		"A" MAX. UNIT WIDTH	"BW" BELT WIDTH	"W" WIDTH BETWEEN FLANGES		"A" MAX. UNIT WIDTH
	MAX.	MIN.			MAX.	MIN.	
12" [305]	42" [1066.8]	15" [381.0]	54" [1371.6]	48" [1219.2]	78" [1981.2]	51" [1295.4]	90" [2286.0]
18" [457.2]	48" [1219.2]	21" [533.4]	60" [1524.0]	54" [1371.6]	84" [2133.6]	57" [1447.8]	96" [2438.4]
24" [609.6]	54" [1371.6]	27" [685.8]	66" [1676.4]	60" [1524.0]	90" [2286.0]	63" [1600.2]	102" [2590.8]
30" [762.0]	60" [1524.0]	33" [838.2]	72" [1828.8]	66" [1676.4]	96" [2438.4]	69" [1752.6]	108" [2743.2]
36" [914.4]	66" [1676.4]	39" [990.6]	78" [1981.2]	72" [1828.8]	102" [2590.8]	75" [1905.0]	114" [2895.6]
42" [1066.8]	72" [1828.8]	45" [1143.0]	84" [2133.6]	84" [2133.6]	114" [2895.6]	87" [2209.8]	126" [3200.4]

NOTE: ALL DIMENSIONS IN ( ) ARE IN MILLIMETERS. NOTE: 2"x2" SUPPORT TUBE IS SOLID (1 PIECE) CONSTRUCTION. ALLOWANCE MUST BE MADE FOR INITIAL INSTALLATION.



# SEE PRICE SHEET FOR PRICES

DETERMINE TOTAL PRICE BY ADDING THE BASIC PRICE (I.) AND ADJUSTMENT AND MOUNTING (II.) TOGETHER

## MODEL RLP URETHANE WIPER CLEANER

### I. BASIC UNIT PRICES

Size Inches	Shipping Weight Lbs.	R 80 Durom. SBR Rubber	U 90 Durom. Urethane
12	151	\$	\$
18	160		
24	168		
30	175		
36	183		
42	189		
48	194		
54	202		
60	215		
66	228		
72	244		
84	258		

### II. ADJUSTMENT & MOUNTING OPTIONS

Model Number	Description	Price
358	Single Pressure Handle Adjustment w/Flange Mounting	\$
368	Single Pressure Handle Adjustment w/Hanger Mounting	
258	Dual Ratchet Adjustment w/Flange Mounting	
268	Dual Ratchet Adjustment w/Hanger Mounting	
158	Air Tensioning Adjustment w/Flange Mounting	
168	Air Tensioning Adjustment w/Hanger Mounting	

### REPLACEMENT PARTS

Part Number	Description	Price
RLP-12U*	12" Wide 90 Durometer Urethane Blade Replacement	\$
RLP-18U*	18" Wide 90 Durometer Urethane Blade Replacement	
RLP-12R*	12" Wide 80 Durometer SBR Rubber Blade Replacement	
RLP-18R*	18" Wide 80 Durometer SBR Rubber Blade Replacement	
RLP-80R	1" Thick x 6" Wide 80 Durometer SBR Rubber	

\*TO DETERMINE THE CORRECT NUMBER OF BLADES REQUIRED, PLEASE CONSULT CHART (REPLACEMENT BLADES) ON PAGE 2.

## MODEL RFA MULTIPLE BLADE-SPRING ARM CLEANER

### I. BASIC UNIT PRICES

Size In.	No. Wiper Blade	Ship. Wt. Lbs.	H Heat Treated Spring Steel	S Stainless Steel	U Urethane	N Nickel Alloy Coated S/S	C Ceramic	T Tungsten Carbide
12	2	132	\$	\$	\$	\$	\$	\$
18	3	158						
24	4	184						
30	5	210						
36	7	236						
42	8	262						
48	9	289						
54	10	315						
60	11	341						
66	13	367						
72	14	393						
84	16	445						

### II. ADJUSTMENT & MOUNTING OPTIONS

Model Number	Description	Price
358	Single Pressure Handle Adjustment w/Flange Mounting	\$
368	Single Pressure Handle Adjustment w/Hanger Mounting	
258	Dual Ratchet Adjustment w/Flange Mounting	
268	Dual Ratchet Adjustment w/Hanger Mounting	contact sales for pricing
158	Air Tensioning Adjustment w/Flange Mounting	contact sales for pricing
168	Air Tensioning Adjustment w/Hanger Mounting	contact sales for pricing

### REPLACEMENT PARTS

Part Number	Description	Price
RFA-H	Heat Treated Spring Steel Wiper Blade	\$
RFA-S	Stainless Steel Wiper Blade	
RFA-N	Nickel-Alloy Coated Stainless Steel Wiper Blade	
RFA-U	Urethane Wiper Blade	
RFA-C	Ceramic Wiper Blade	
RFA-T	Tungsten Carbide Wiper Blade	
RFA-A08	8" Spring Arm	
RFA-A10	10" Spring Arm	
RFA-A11	Adjustable spring arm bracket & hardware	

©COPYRIGHT CONVEYOR COMPONENTS CO. 1987



## CONVEYOR COMPONENTS CO.

130 SELTZER RD. • P.O. BOX 167 • CROSWELL, MI 48422

810-679-4211 • FAX 810-679-4510 • 800-233-3233

WEB SITE: www.conveyorcomponents.com

EMAIL: info@conveyorcomponents.com



"charge it"

F.O.B. CROSWELL, MICHIGAN

TERMS: NET 30 DAYS

TAX NOT INCLUDED • PRICES SUBJECT TO CHANGE WITHOUT NOTICE