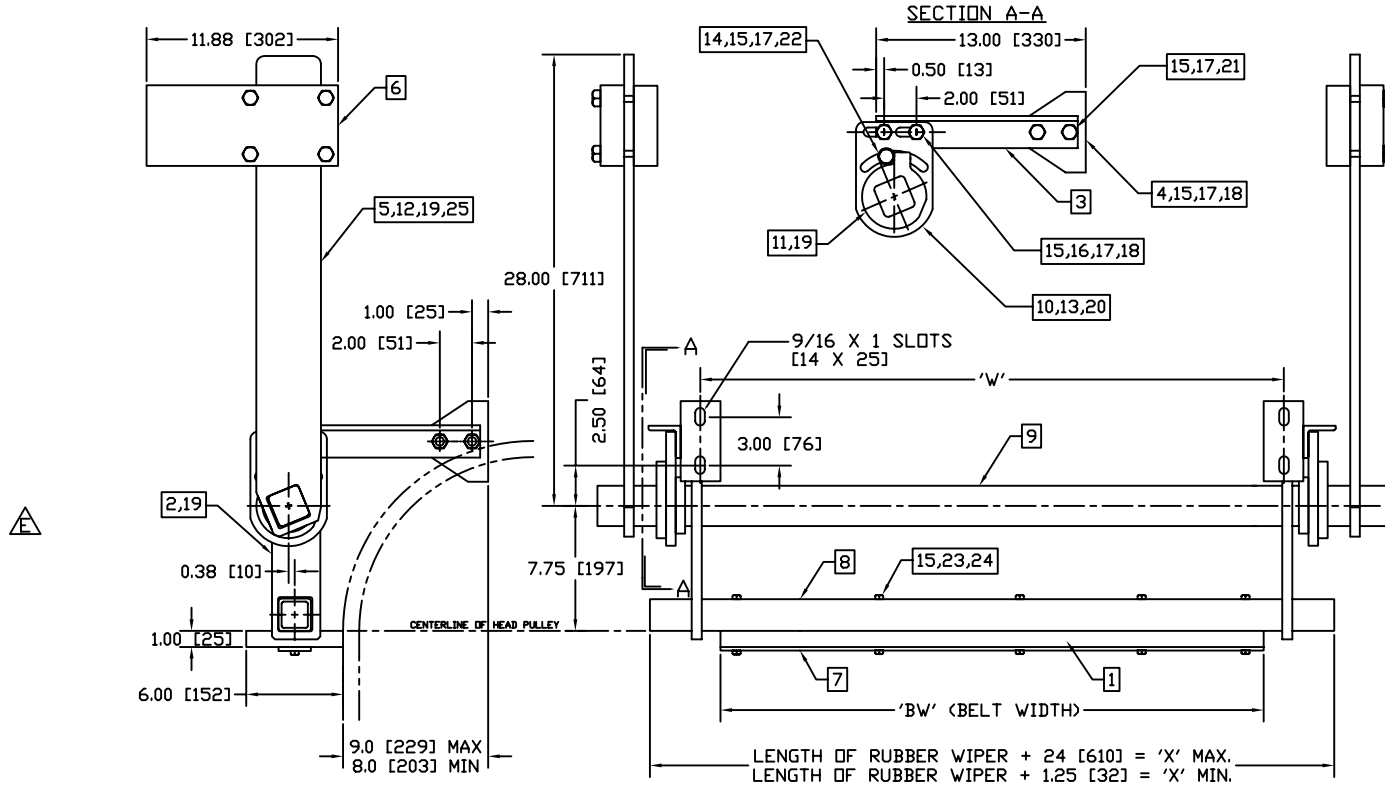


|                   |        |                                  |                |
|-------------------|--------|----------------------------------|----------------|
| DWG. NO. D0130001 |        | SHT. 1-1                         | REV. E         |
| REVISIONS         |        |                                  |                |
| REV.              | E.C.D. | DESCRIPTION                      | DATE BY APP'D  |
| E                 | 2322   | CORRECT PART LIST / SUPPORT TUBE | 08/12/04 GL JK |

1. MOUNT THE CLEANER SO THAT THE LEADING EDGE OF THE WIPER ① IS DIRECTLY BELOW THE CENTER OF THE HEAD PULLEY AND THE BLADE ARM, ② IS PARALLEL WITH THE BELT.
2. LOCATE THE COUNTERWEIGHT ARMS, ⑤ TO LIE APX. HORIZONTAL.
3. SLIDE COUNTERWEIGHT ⑥ ONTO ARMS AND POSITION FOR MOST EFFECTIVE CLEANING.
4. LOCATE THE STOP ④, TO PREVENT THE WIPER SUPPORT FROM CONTACTING THE BELT AS THE WIPER WEARS.



| STANDARD MODEL S | DIMENSION TABLE |          |          |             | PART 'A' | PART 'B' | PART 'C' | DWG 'D' (PART 'C') | PART 'E' | QTY 'F'  |     |
|------------------|-----------------|----------|----------|-------------|----------|----------|----------|--------------------|----------|----------|-----|
|                  | 'BW'            | 'V'      |          | 'X'         |          |          |          |                    |          |          |     |
|                  |                 | MIN      | MAX      | MIN         |          |          |          |                    |          |          | MAX |
| CW-12            | 12[305]         | 10[254]  | 32[813]  | 13.25[337]  | 36[914]  | VB-12    | 40110037 | 40110003           | CS110035 | 20130007 | 2   |
| CW-16            | 16[406]         | 14[356]  | 36[914]  | 17.25[438]  | 40[1016] | VB-16    | 40110039 | 40110005           | CS110035 | 20130008 | 2   |
| CW-18            | 18[457]         | 16[406]  | 38[965]  | 19.25[489]  | 42[1067] | VB-18    | 40110040 | 40110006           | CS110035 | 20130009 | 3   |
| CW-20            | 20[508]         | 18[457]  | 40[1016] | 21.25[540]  | 44[1118] | VB-20    | 40110041 | 40110007           | CS110035 | 20130010 | 3   |
| CW-24            | 24[610]         | 22[559]  | 44[1118] | 25.25[641]  | 48[1219] | VB-24    | 40110042 | 40110008           | CS110035 | 20130011 | 3   |
| CW-30            | 30[762]         | 28[711]  | 50[1270] | 31.25[794]  | 54[1372] | VB-30    | 40110043 | 40110009           | DS110021 | 20130012 | 4   |
| CW-36            | 36[914]         | 34[864]  | 56[1422] | 37.25[946]  | 60[1524] | VB-36    | 40110044 | 40110010           | DS110021 | 20130013 | 4   |
| CW-42            | 42[1067]        | 40[1016] | 62[1575] | 43.25[1099] | 66[1676] | VB-42    | 40110045 | 40110011           | DS110021 | 20130014 | 4   |
| CW-48            | 48[1219]        | 46[1168] | 68[1727] | 49.25[1251] | 72[1829] | VB-48    | 40110046 | 40110012           | DS110021 | 20130015 | 5   |
| CW-54            | 54[1372]        | 52[1321] | 74[1880] | 55.25[1403] | 78[1981] | VB-54    | 40110047 | 40110013           | DS110021 | 20130016 | 6   |
| CW-60            | 60[1524]        | 58[1473] | 80[2032] | 61.25[1556] | 84[2134] | VB-60    | 40110048 | 40110014           | DS110021 | 20130017 | 6   |
| CW-72            | 72[1829]        | 70[1778] | 92[2337] | 73.25[1861] | 96[2438] | VB-72    | 40110049 | 40110015           | DS110021 | 20130018 | 7   |

| REV. | QTY | PART NO. | DESCRIPTION                         | REV. |
|------|-----|----------|-------------------------------------|------|
| 25   | 1   | 20370001 | A0370007 NAMEPLATE CCC BELT CLEANER | 1    |
| 24   | 1   | 22014203 | 3/8-16 LOCKNUT N/I Z/P              | 'F'  |
| 23   | 1   | 22011212 | 3/8-16 X 4 HHCS Z/P                 | 'F'  |
| 22   | 2   | 22011305 | 1/2-13 X 2 CARRIAGE BOLT Z/P        | 2    |
| 21   | 4   | 20041301 | 1/2-13 X 1 1/2 HHCS Z/P             | 4    |
| 20   | 2   | 22011209 | 3/8-16 X 1 SQ HD SET SCREW Z/P      | 2    |
| 19   | 14  | 22011150 | 5/16-18 X 5/8 SET SCREW Z/P         | 14   |
| 18   | 8   | 22011302 | 1/2-13 X 2 HHCS Z/P                 | 8    |
| 17   | 14  | 22014401 | 1/2-13 HEX NUT Z/P                  | 14   |
| 16   | 4   | 22013103 | 1/2 IN FLATWASHER Z/P               | 4    |
| 15   | 14  | 22013502 | 1/2" LOCKWASHER Z/P                 | 14   |
| 14   | 2   | 20130001 | A0130001 STOP                       | 2    |
| 13   | 2   | 20130003 | B0130004 MOUNTING PLATE             | 2    |
| 12   | 2   | 22016101 | #2 X 1/4 DRIVE RIVET SST            | 2    |
| 11   | 2   | 20130030 | C0130002 STOP DOG                   | 2    |
| 10   | 2   | 20190001 | A0190005 COLLAR                     | 2    |
| 9    | 1   | 'E'      | B0130005 PIVOT TUBE                 | 1    |
| 8    | 1   | 'C'      | 'D' SUPPORT TUBE                    | 1    |
| 7    | 1   | 'B'      | CS110022 BACKING BAR                | 1    |
| 6    | 2   | 20130006 | B0130003 COUNTERWEIGHT ASSEMBLY     | 2    |
| 5    | 2   | 20130032 | C0130003 COUNTERWEIGHT ARM          | 2    |
| 4    | 2   | 20120001 | A0120001 HANGER BRACKET             | 2    |
| 3    | 2   | 40110002 | CS110020 HANGER BRACKET             | 2    |
| 2    | 2   | 20130031 | C0130001 BLADE ARM                  | 2    |
| 1    | 1   | 'A'      | CS110017 WIPER                      | 1    |

| ITEM   | MATL/PART | DRAWING                            | DESCRIPTION                | QTY      |
|--|-----------|------------------------------------|----------------------------|----------|
| THIS DRAWING IS COMPUTER GENERATED.  |           |                                    |                            |          |
| DWN  | CLO       | DATE                               | CONVEYOR COMPONENTS CO.    |          |
| CKD  | DATE      | 130 SELTZER RD, CROSWELL, MI 48422 |                            |          |
| APD  | JK        | DATE                               | COUNTERWEIGHT BELT CLEANER |          |
| THIS PRINT IS THE PROPERTY OF CONVEYOR COMPONENTS CO. AND MUST NOT BE USED IN WHOLE, OR PART WITHOUT WRITTEN PERMISSION. |           |                                    |                            |          |
| PLEASE RETURN ON DEMAND.   |           | SCALE                              | DWG. NO. D0130001          | REV. E   |
|  |           | 1=1/4                              |                            | SHT. 1-1 |

DWG. NO. D0130001

SHT. 1-1