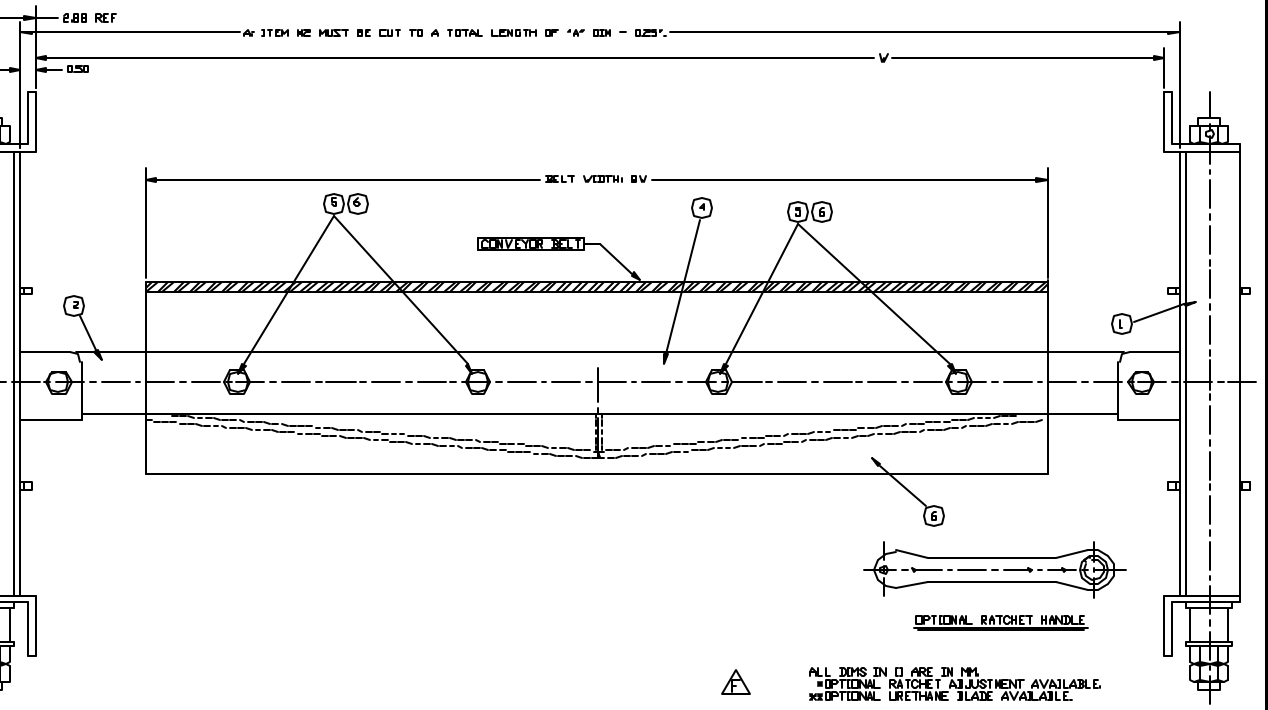
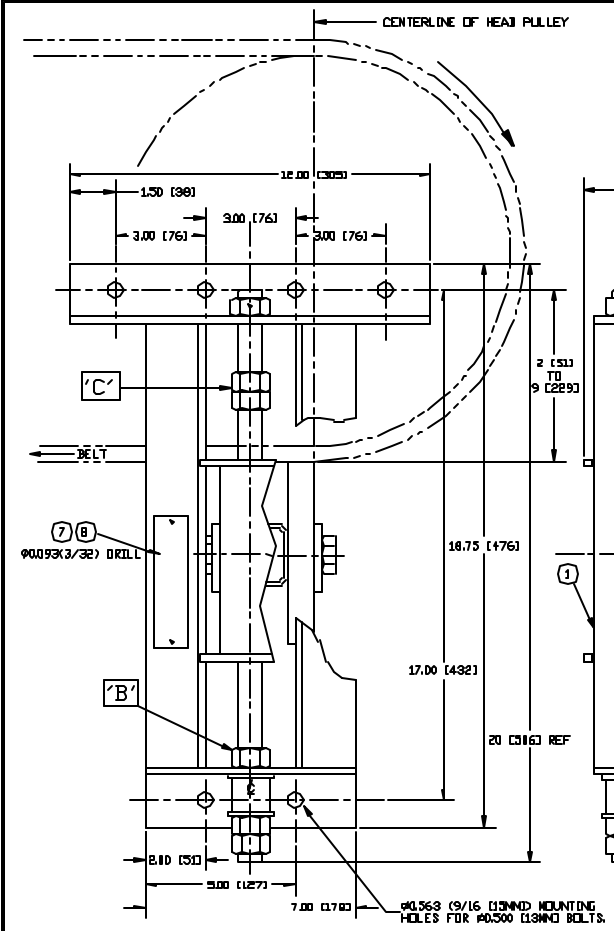


DWG. NO. D0100001 SHT. 1 REV. 1

REVISIONS				
REV.	NO.	DESCRIPTION	DATE	BY
F	232E	CORRECT SUPPORT TUBE REFS	08/12/79	JK

INSTALLATION INSTRUCTIONS

1. MOUNT SIDE FRAMES ON CONVEYOR FRAME OR CHUTE SO THAT FIRST MOUNTING HOLE IS 2 1/2" AHEAD OF PULLEY CENTERLINE AND 4" TO 7" ABOVE THE BOTTOM SURFACE OF THE BELT.
2. MEASURE BETWEEN THE INSIDE SURFACES OF THE SLIDES AND CUT THE SUPPORT TUBE 1/4" SHORTER THAN THIS DIMENSION.
3. PLACE THE SUPPORT TUBE IN THE SOCKETS AND MARK FOR THE TWO BOLTS.
4. DRILL THE ENDS OF THE TUBE WITH A 9/16" DRILL AND BOLT IN PLACE.
5. ADJUST WIPER UP UNTIL EVEN CONTACT IS MADE WITH BELT, BUT NO PRESSURE IS APPLIED.
6. TO LOAD THE WIPER, TURN THE RODS 20 TURNS AND LOCK USING NUT '7'.
7. LOCATE NUTS '1' 3/4" ABOVE SLIDE TO PREVENT THE SUPPORT FROM CONTACTING THE BELT.
8. THE WIPER WILL NOW SELF ADJUST UNTIL THE STOP NUTS ARE CONTACTED, AT WHICH POINT IT CAN BE TURNED OVER AND ADJUSTED PER STEPS 5 THRU 7.



STANDARD MODELS	RATCHET MODELS	DIMENSION TABLE		QTY	PART 'A'	PART 'A'	PART 'B'	PART 'C'
		2BV	1V					
LP-12S	LP-12R	32(813)	25(635)	1	4010002	CS110025	WB-12	4010027
LP-16S	LP-16R	36(914)	29(738)	2	4010005	CS110035	WB-16	4010039
LP-18S	LP-18R	38(967)	31(787)	3	4010006	CS110035	WB-18	4010040
LP-20S	LP-20R	40(1016)	33(838)	3	4010007	CS110035	WB-20	4010041
LP-24S	LP-24R	44(1118)	37(939)	3	4010008	CS110035	WB-24	4010042
LP-30S	LP-30R	50(1270)	43(1092)	4	4010009	DS110021	WB-30	4010043
LP-36S	LP-36R	56(1418)	49(1244)	4	4010010	DS110021	WB-36	4010044
LP-42S	LP-42R	62(1570)	55(1396)	5	4010011	DS110021	WB-42	4010045
LP-48S	LP-48R	68(1722)	61(1548)	5	4010012	DS110021	WB-48	4010046
LP-54S	LP-54R	74(1874)	67(1700)	5	4010013	DS110021	WB-54	4010047
LP-60S	LP-60R	80(2026)	73(1852)	6	4010014	DS110021	WB-60	4010048
LP-72S	LP-72R	96(2438)	89(2264)	7	4010015	DS110021	WB-72	4010049

ALL DIMS IN Ø ARE IN MM.
 *OPTIONAL RATCHET ADJUSTMENT AVAILABLE.
 **OPTIONAL URETHANE BLADE AVAILABLE.

NO.	DESCRIPTION	QTY	REVISION
6	BRUSH	1	1
7	837/0001	2	1
8	837/0003	2	1
9	837/0005	2	1
10	837/0007	2	1
11	837/0009	2	1
12	837/0011	2	1
13	837/0013	2	1
14	837/0015	2	1
15	837/0017	2	1
16	837/0019	2	1
17	837/0021	2	1
18	837/0023	2	1
19	837/0025	2	1
20	837/0027	2	1
21	837/0029	2	1
22	837/0031	2	1
23	837/0033	2	1
24	837/0035	2	1
25	837/0037	2	1
26	837/0039	2	1
27	837/0041	2	1
28	837/0043	2	1
29	837/0045	2	1
30	837/0047	2	1
31	837/0049	2	1
32	837/0051	2	1
33	837/0053	2	1
34	837/0055	2	1
35	837/0057	2	1
36	837/0059	2	1
37	837/0061	2	1
38	837/0063	2	1
39	837/0065	2	1
40	837/0067	2	1
41	837/0069	2	1
42	837/0071	2	1
43	837/0073	2	1
44	837/0075	2	1
45	837/0077	2	1
46	837/0079	2	1
47	837/0081	2	1
48	837/0083	2	1
49	837/0085	2	1
50	837/0087	2	1
51	837/0089	2	1
52	837/0091	2	1
53	837/0093	2	1
54	837/0095	2	1
55	837/0097	2	1
56	837/0099	2	1
57	837/0101	2	1
58	837/0103	2	1
59	837/0105	2	1
60	837/0107	2	1
61	837/0109	2	1
62	837/0111	2	1
63	837/0113	2	1
64	837/0115	2	1
65	837/0117	2	1
66	837/0119	2	1
67	837/0121	2	1
68	837/0123	2	1
69	837/0125	2	1
70	837/0127	2	1
71	837/0129	2	1
72	837/0131	2	1
73	837/0133	2	1
74	837/0135	2	1
75	837/0137	2	1
76	837/0139	2	1
77	837/0141	2	1
78	837/0143	2	1
79	837/0145	2	1
80	837/0147	2	1
81	837/0149	2	1
82	837/0151	2	1
83	837/0153	2	1
84	837/0155	2	1
85	837/0157	2	1
86	837/0159	2	1
87	837/0161	2	1
88	837/0163	2	1
89	837/0165	2	1
90	837/0167	2	1
91	837/0169	2	1
92	837/0171	2	1
93	837/0173	2	1
94	837/0175	2	1
95	837/0177	2	1
96	837/0179	2	1
97	837/0181	2	1
98	837/0183	2	1
99	837/0185	2	1
100	837/0187	2	1

THIS DRAWING IS COMPUTER GENERATED
 CONVEYOR COMPONENTS CO.
 130 SELTZER RD. CROSVELL, NJ 08822

LP MODEL BELT CLEANER

THIS PRINT IS THE PROPERTY OF CONVEYOR COMPONENTS CO. AND MUST NOT BE USED IN WHOLE OR PART WITHOUT WRITTEN PERMISSION.

PLEASE RETURN ON DEMAND

PART NO. D0100001 REV. F

SCALE N.A. SIZE D SHT. 1-1

DWG. NO. D0100001 SHT. 1 REV. 1